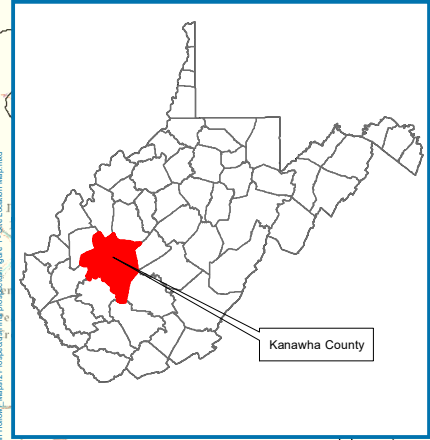
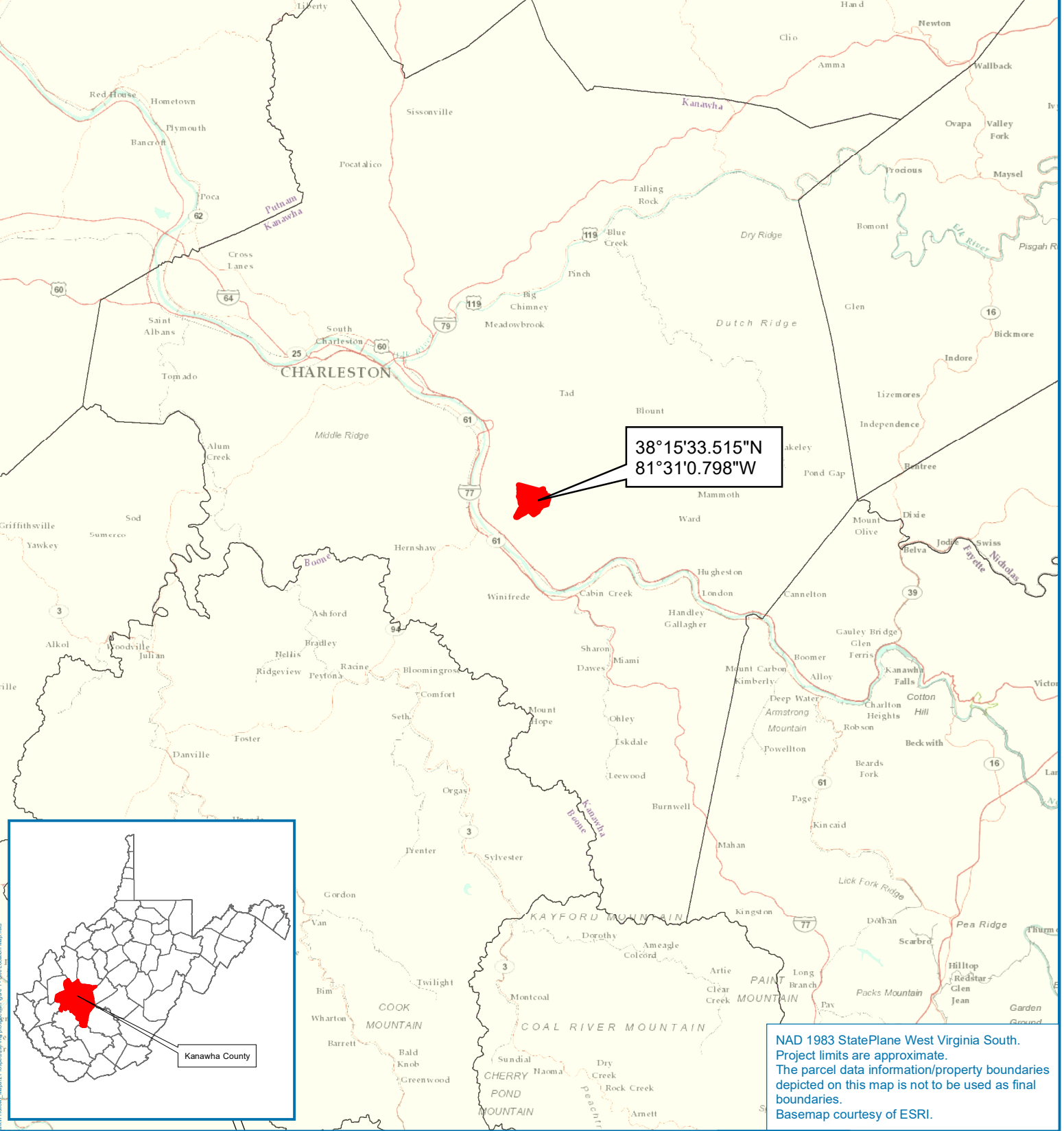


Directions to the Site from Charleston WV: Head northeast on Dickinson St toward Lee St E (30ft). Turn right at the 1st cross street onto Lee St E (0.3 miles). Use any lane to turn left onto Brooks St (0.2 miles). Slight right (59 feet). Take the ramp on the left onto I-64 E/I-77 S (4.2 miles). Take exit 96 for US-60 E toward Midland Trail/Belle (0.3 miles). Continue onto US-60 E (6.6 miles). Turn left toward Midland Ave (151 feet). Turn right onto Midland Ave (0.3 miles). Turn left onto E Dupont Ave (0.5 Miles). Turn left onto Co Rte 60/21 (0.3 Miles). Slight right onto US-60 W (1.4 Miles). Slight right onto Simmons Creek Road (125 feet). Sharp right to stay on Simmons Creek Road (2.4 miles). Arrive at destination



NAD 1983 StatePlane West Virginia South.
Project limits are approximate.
The parcel data information/property boundaries
depicted on this map is not to be used as final
boundaries.
Basemap courtesy of ESRI.

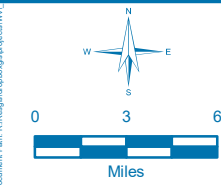


Figure 1: Site Location Map
Larkin Hollow Mitigation Bank
Kanawha County, West Virginia
Charleston East and Belle Quadrangles

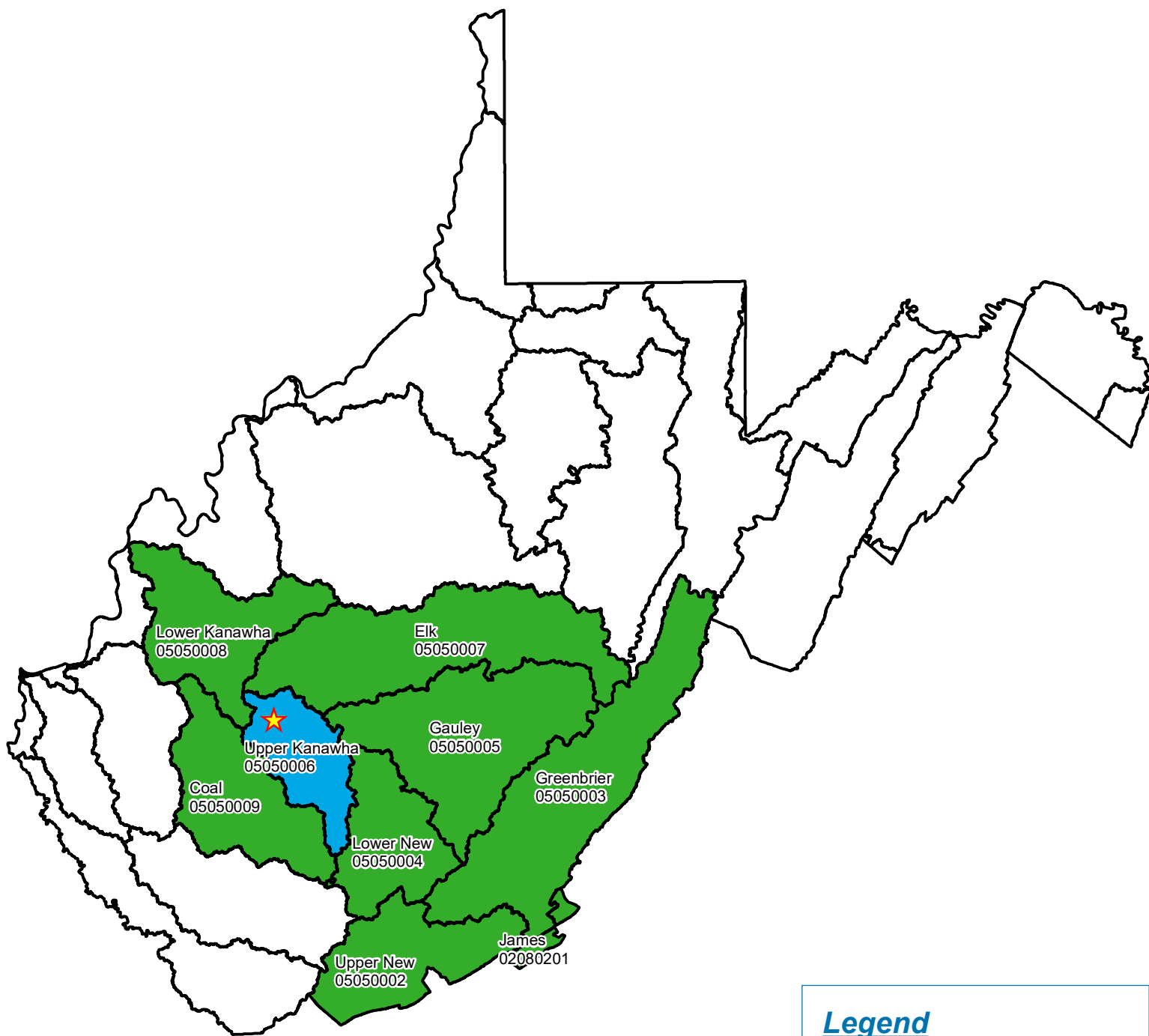
Date: 5/26/2020

Drawn by: NDR

Checked by: JS



1 in = 6 miles





NAD 1983 StatePlane West Virginia South.
 Project limits are approximate.
 The parcel data information/property boundaries
 depicted on this map is not to be used as final
 boundaries.
 Basemap courtesy of ESRI.

Legend

-  Project Location
-  8-Digit Hydrologic Unit
-  Primary Service Area
-  Secondary Service Area

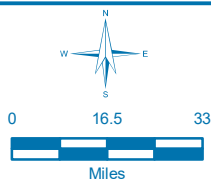


Figure 7: Service Area Map
Larkin Hollow Mitigation Bank

Kanawha County, West Virginia

Date: 5/26/2020

Drawn by: NDR

Checked by: JS

1 in = 33 miles



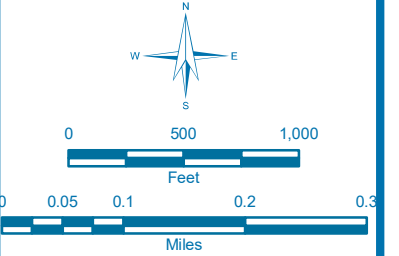
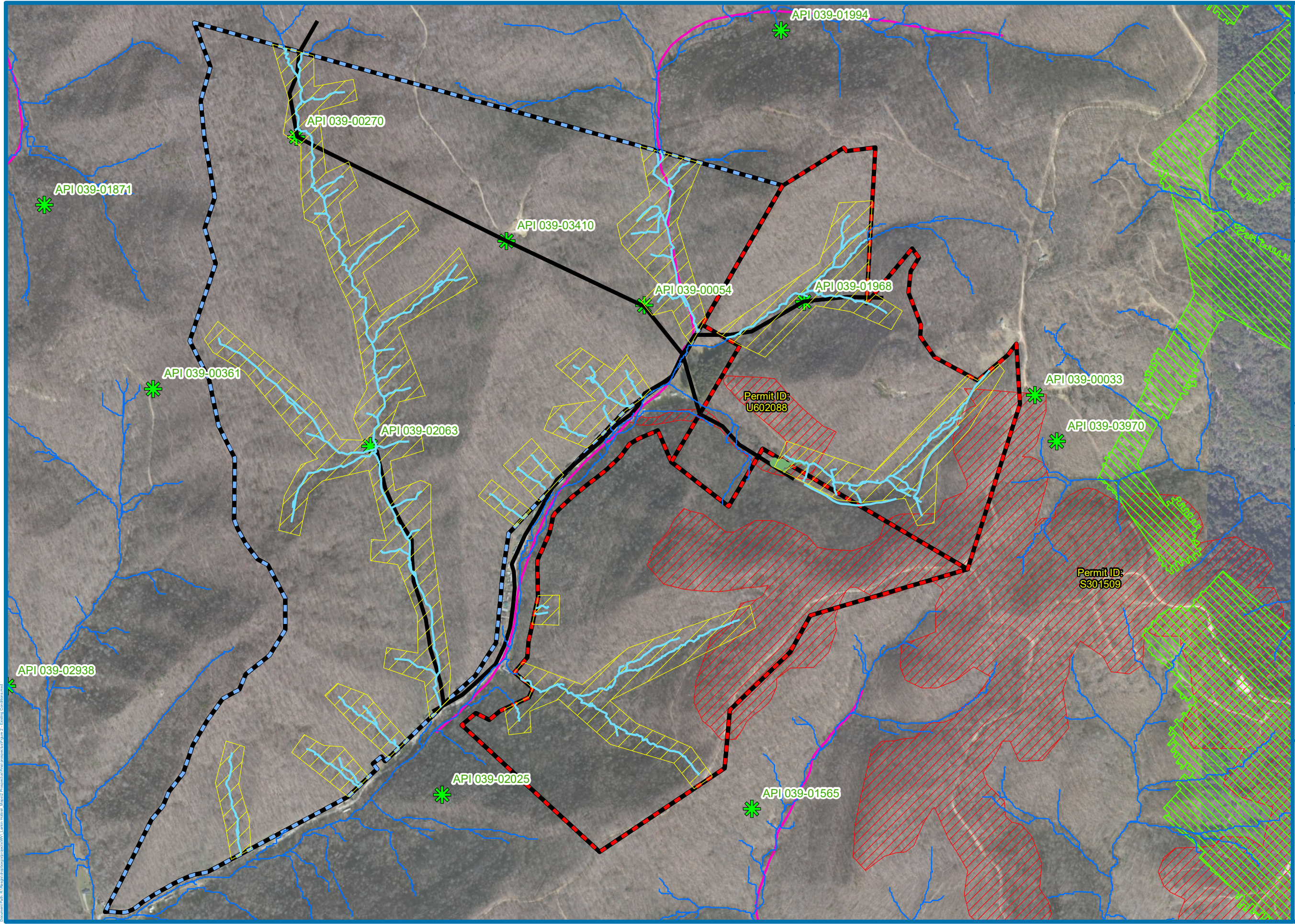


Figure 2: Existing Conditions Map

Larkin Hollow Mitigation Bank

Kanawha County, West Virginia

Date: 5/26/2020	Drawn by: JAS
Checked by: KW	Figure 2 - Existing Conditions.mxd

LEGEND

- George's Creek Investment Parcel
- Succotash LLC Parcel
- Larkin Hollow Project Area
- Delineated Wetlands
- Project Streams
- Outside Streams
- 303(d) Listed Stream
- Gas Lines
- Active Gas Well
- Underground Mining Limits
- Mining Permit Boundary

REFERENCE

- 1) Basemap from ESRI.
- 2) NAD 1983 State Plane West Virginia South.
- 3) The parcel data information/property boundaries depicted on this map is for prospect assessment purposes only. It is not to be used as final boundaries.

Legend

-  Larkin Hollow Parcels
-  Larkin Hollow Project Area
-  Level 1 (4,812')
-  Level 3 (662')
-  Establish (802')
-  Enhancement (6,491')
-  Preservation (27,204')
-  Roadside
-  Mining Permit Boundary

- 1) Basemap from ESRI.
- 2) NAD 1983 State Plane West Virginia South.
- 3) The parcel data information/property boundaries depicted on this map is for prospect assessment purposes only. It is not to be used as final boundaries.

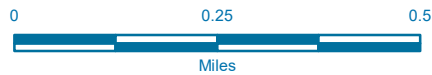


Figure 8: Preliminary Resource Development Map
Larkin Hollow Mitigation Bank

Kanawha County, West Virginia
Upper Kanawha Watershed

Date: 5/26/2020

Drawn by: JAS

Checked by: xxxxxxxx

Figure 8 - Preliminary RDM.mxd

