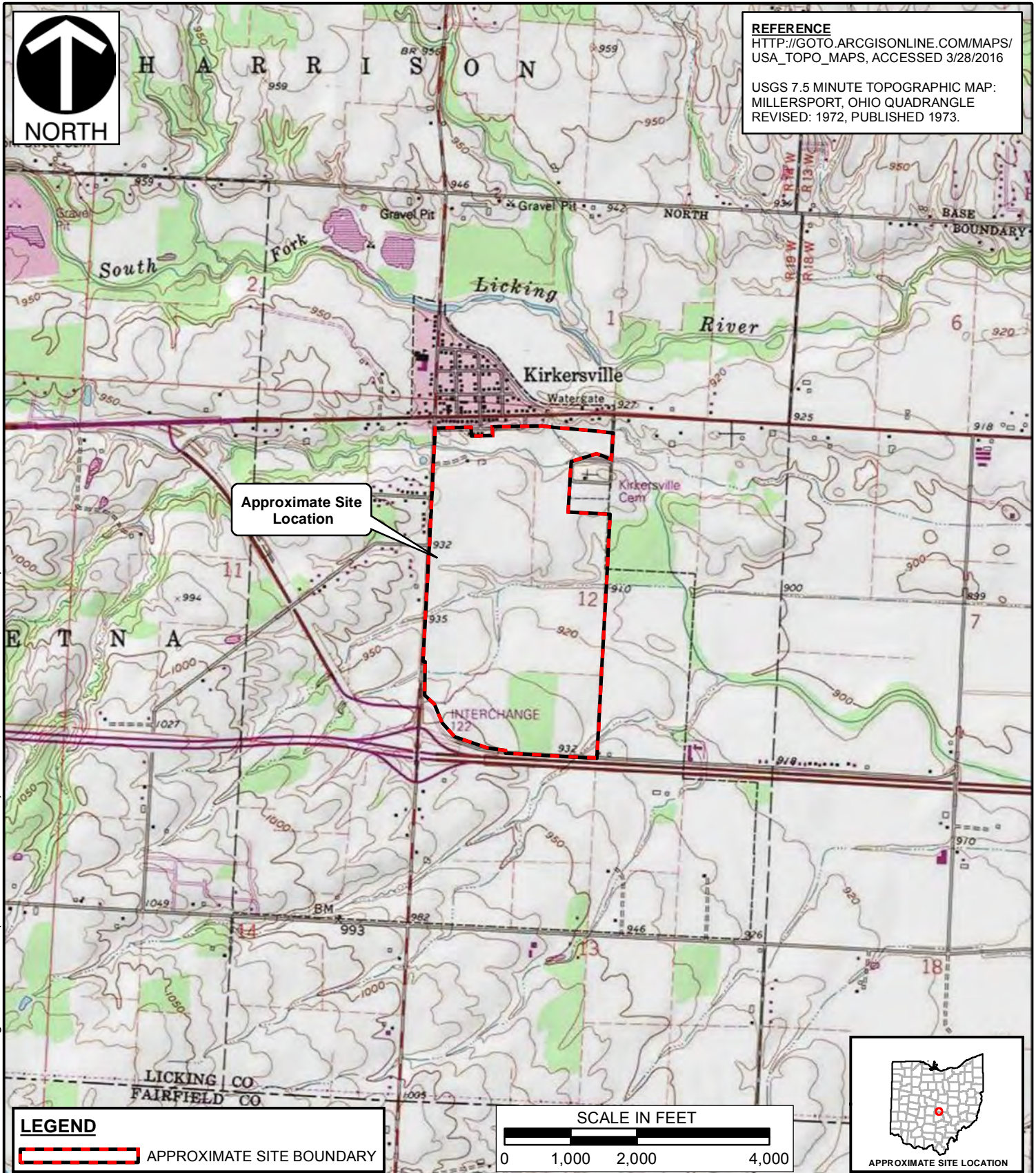


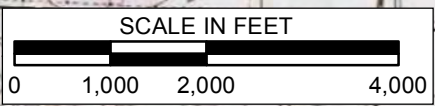


**REFERENCE**  
[HTTP://GOTO.ARCGISONLINE.COM/MAPS/USA\\_TOPO\\_MAPS](http://gto.arcgisonline.com/maps/usa_topo_maps), ACCESSED 3/28/2016  
 USGS 7.5 MINUTE TOPOGRAPHIC MAP:  
 MILLERSPORT, OHIO QUADRANGLE  
 REVISED: 1972, PUBLISHED 1973.



Approximate Site Location

**LEGEND**  
 APPROXIMATE SITE BOUNDARY



P:\2016\161-001\GIS\Maps\PJWD\161001\_PJWD\_Figure\_1.mxd LS:( 3/28/2016 - akems) - LP:3/17/2016 1:28:49 PM - LExported:3/28/2016 9:48:24 AM



**Civil & Environmental Consultants, Inc.**  
 250 Old Wilson Bridge Road, Suite 250 - Worthington, OH 43085  
 614-540-6633 · 888-598-6808  
 www.cecinc.com

ANDERSON LAYMAN COMPANY  
 OUTVILLE ROAD  
 HARRISON TOWNSHIP, LICKING COUNTY, OHIO

**SITE LOCATION MAP**

DRAWN BY:	AMK	CHECKED BY:	JMV	APPROVED BY:	JCD*	FIGURE:	<b>Sheet 1</b>
DATE:	3/28/2016	MAP SCALE:	1" = 2,000'	PROJECT NO:	161-001		

\*Hand signature on file