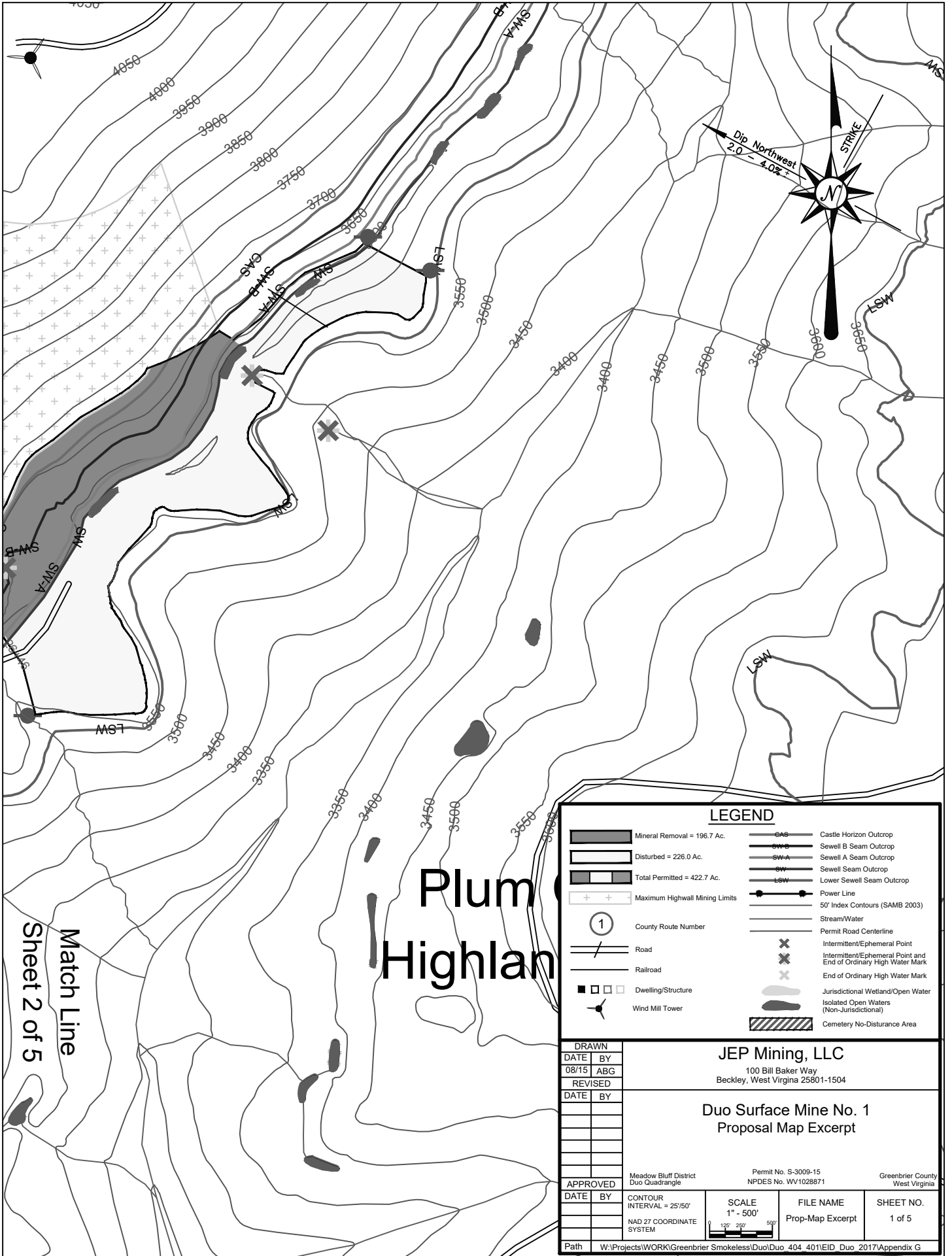


DRAWN		<b>JEP Mining, LLC</b> P.O. Box Rupert, WV 25984			
DATE	BY				
11/17	BJC				
REVISED		<b>Duo Surface Mine No. 1</b> General Location Map Exhibit 1  Meadow Bluff District Duo Quadrangle  Greenbrier County West Virginia			
DATE	BY				
APPROVED		Contour Interval	Coordinate System	Scale	Sheet No.
DATE	BY	N/A	NAD 83 WVSP South	1" = 1 mile	1 of 1
PATH W:\Projects\WORK\Greenbrier Smokeless\Duo\Duo_404_401\GIS\location.mxd					
<b>DECOTA</b> CONSULTING COMPANY, INC.			PREPARED BY: <b>DECOTA CONSULTING COMPANY, INC.</b> 4984 WASHINGTON STREET, W. CROSS LANES, WV 25313		



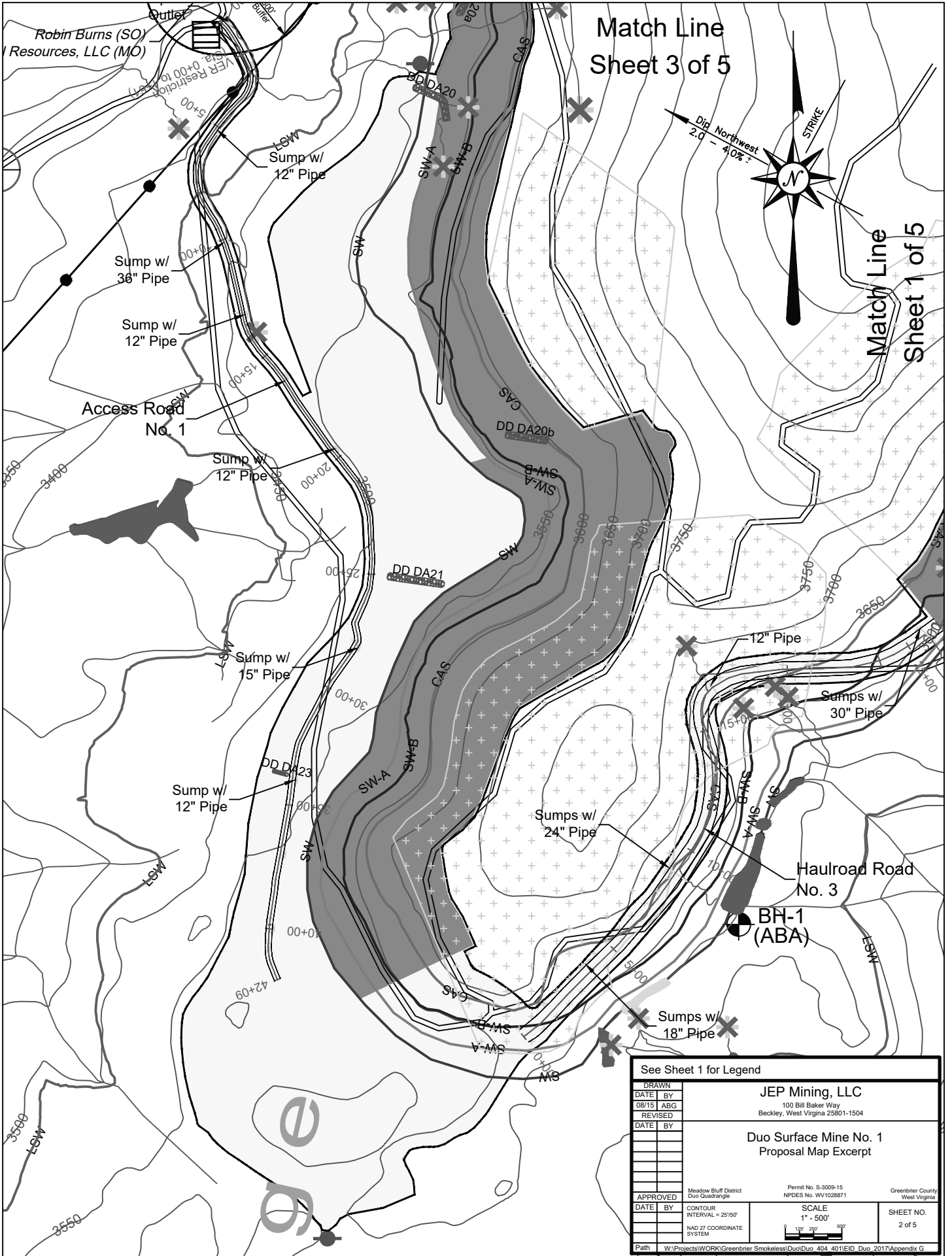
# Plum Highland

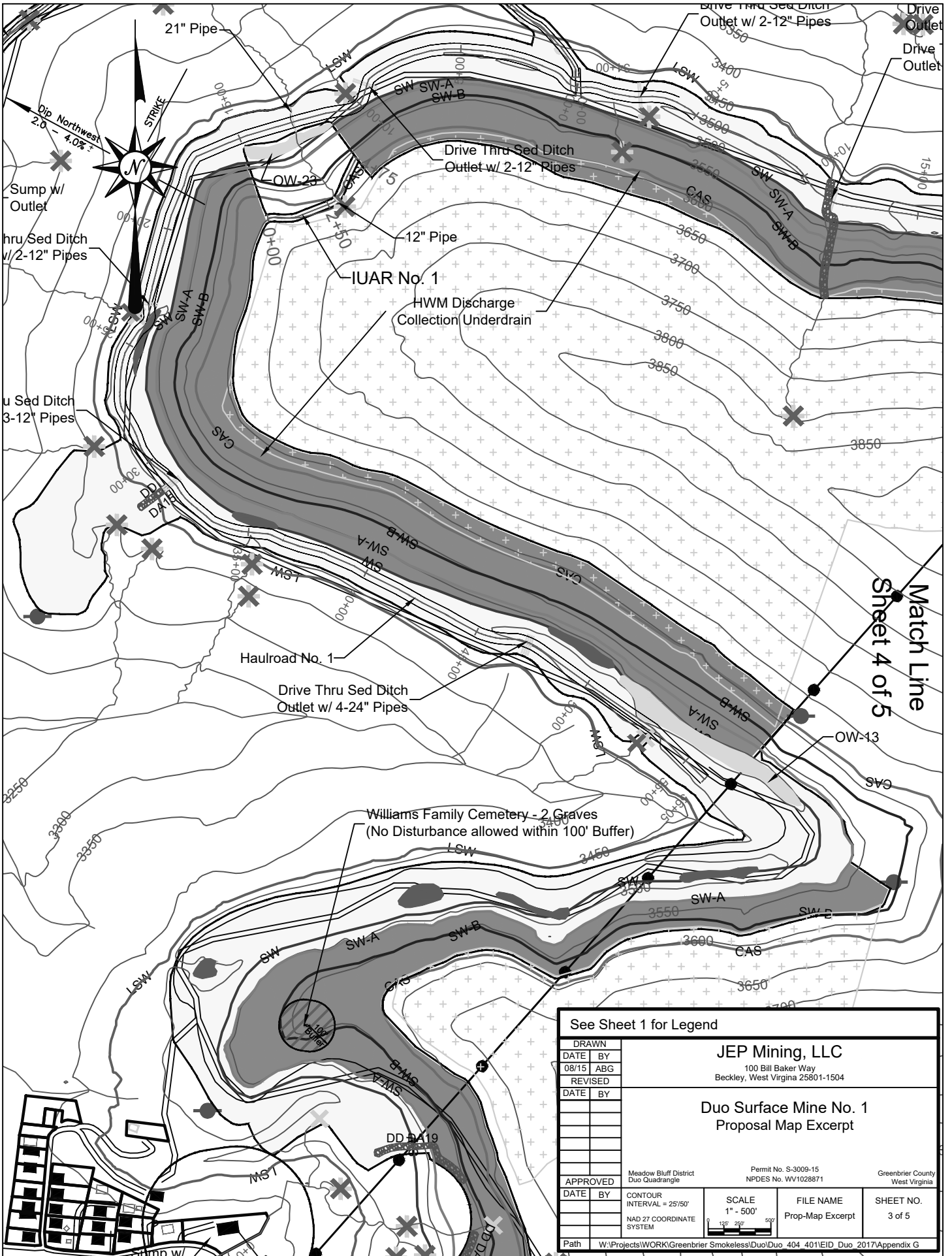
Match Line  
Sheet 2 of 5

### LEGEND

- Mineral Removal = 196.7 Ac.
- Disturbed = 226.0 Ac.
- Total Permitted = 422.7 Ac.
- Maximum Highwall Mining Limits
- County Route Number
- Road
- Railroad
- Dwelling/Structure
- Wind Mill Tower
- Castle Horizon Outcrop
- Sewell B Seam Outcrop
- Sewell A Seam Outcrop
- Sewell Seam Outcrop
- Lower Sewell Seam Outcrop
- Power Line
- 50' Index Contours (SAMB 2003)
- Stream/Water
- Permit Road Centerline
- Intermittent/Ephemeral Point
- Intermittent/Ephemeral Point and End of Ordinary High Water Mark
- End of Ordinary High Water Mark
- Jurisdictional Wetland/Open Water
- Isolated Open Waters (Non-Jurisdictional)
- Cemetery No-Disturbance Area

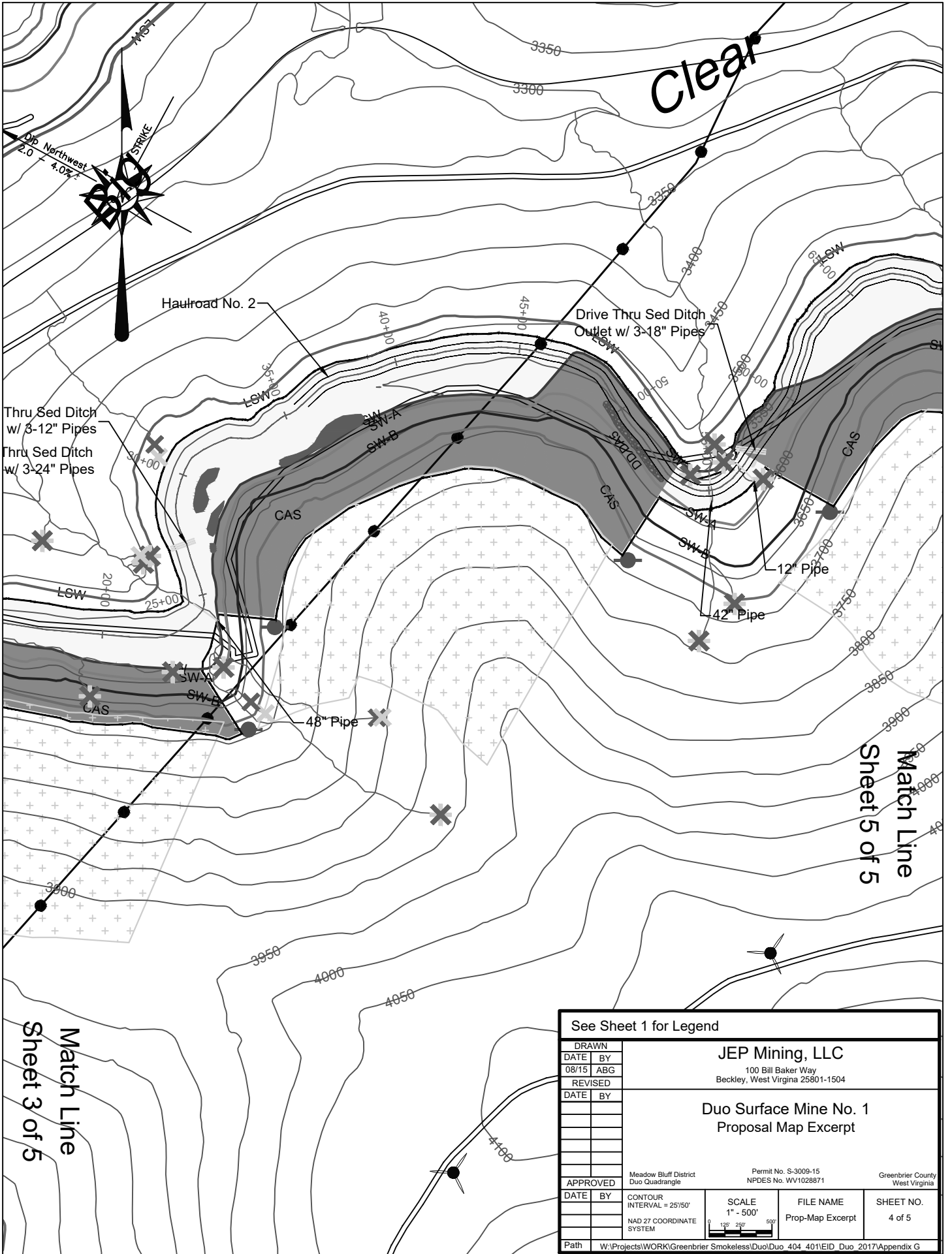
DRAWN		JEP Mining, LLC	
DATE	BY	100 Bill Baker Way Beckley, West Virginia 25801-1504	
08/15	ABG		
REVISED		Duo Surface Mine No. 1 Proposal Map Excerpt	
DATE	BY		
APPROVED		Meadow Bluff District Duo Quadrangle	Permit No. S-3009-15 NPDES No. WV1028871
DATE	BY	Greenbrier County West Virginia	
		CONTOUR INTERVAL = 25'/50'	SCALE 1" = 500'
		NAD 27 COORDINATE SYSTEM	FILE NAME Prop-Map Excerpt
			SHEET NO. 1 of 5
Path W:\Projects\WORK\Greenbrier Smokeless\Duo\Duo_404_401\IED_Duo_2017\Appendix G			



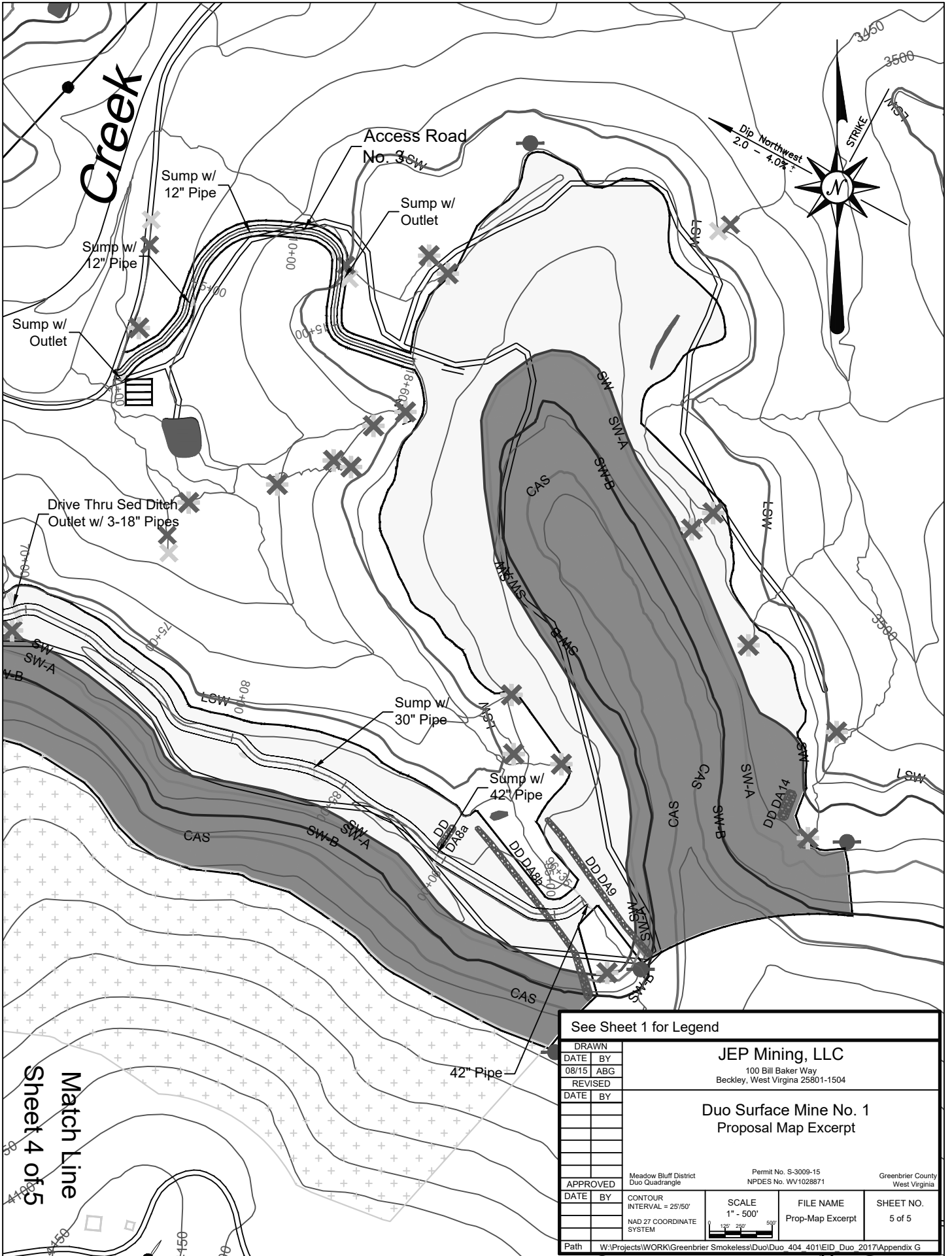


See Sheet 1 for Legend

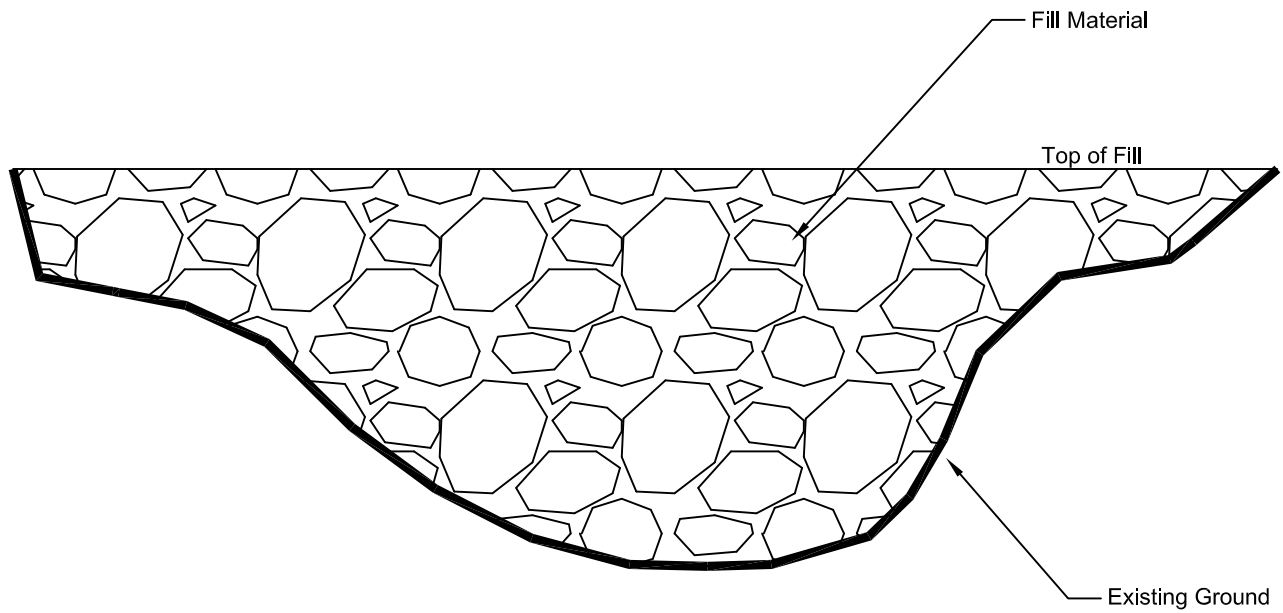
DRAWN		JEP Mining, LLC	
DATE	BY	100 Bill Baker Way Beckley, West Virginia 25801-1504	
08/15	ABG		
REVISED		Duo Surface Mine No. 1 Proposal Map Excerpt	
DATE	BY		
APPROVED		Meadow Bluff District Duo Quadrangle	Permit No. S-3009-15 NPDES No. WV1028871
DATE	BY	Greenbrier County West Virginia	
CONTOUR INTERVAL = 25'/50'		SCALE 1" = 500'	FILE NAME
NAD 27 COORDINATE SYSTEM		125' 250' 500'	Prop-Map Excerpt
			SHEET NO.
			3 of 5
Path W:\Projects\WORK\Greenbrier Smokeless\Duo\Duo 404 401\EID Duo 2017\Appendix G			



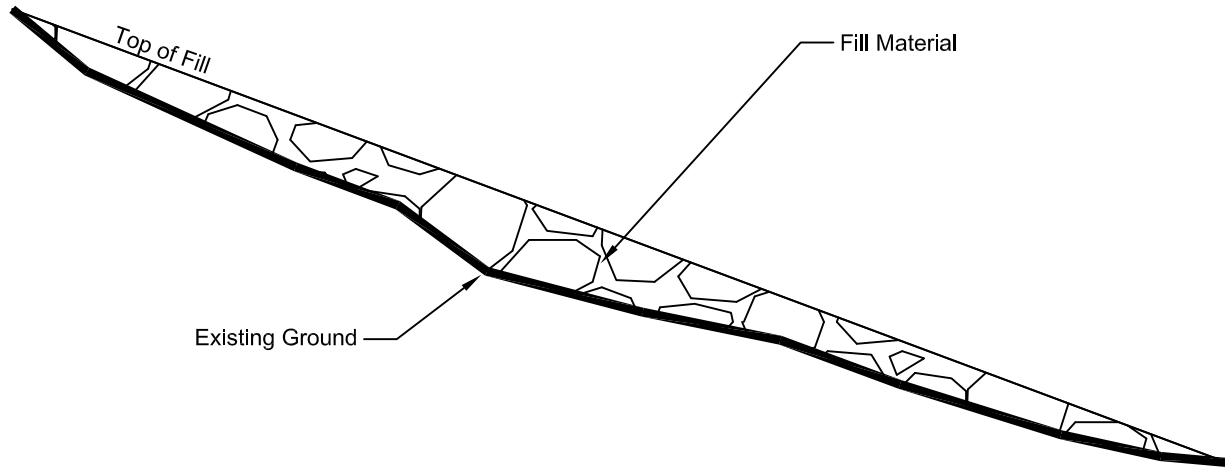
See Sheet 1 for Legend			
DRAWN	JEP Mining, LLC		
DATE	BY	100 Bill Baker Way Beckley, West Virginia 25801-1504	
08/15	ABG		
REVISED			
DATE	BY	Duo Surface Mine No. 1 Proposal Map Excerpt	
		Meadow Bluff District Duo Quadrangle	
		Permit No. S-3009-15 NPDES No. WV1028871	Greenbrier County West Virginia
APPROVED			
DATE	BY	CONTOUR INTERVAL = 25/50'	SCALE 1" = 500'
		NAD 27 COORDINATE SYSTEM	FILE NAME Prop-Map Excerpt
			SHEET NO. 4 of 5
Path W:\Projects\WORK\Greenbrier Smokeless\Duo\Duo 404 4011EID_Duo 2017\Appendix G			



See Sheet 1 for Legend			
DRAWN	JEP Mining, LLC		
DATE	BY	100 Bill Baker Way Beckley, West Virginia 25801-1504	
08/15	ABG		
REVISED			
DATE	BY	Duo Surface Mine No. 1 Proposal Map Excerpt	
	Meadow Bluff District Duo Quadrangle		
	Permit No. S-3009-15 NPDES No. WV1028871		Greenbrier County West Virginia
APPROVED	CONTOUR	SCALE	FILE NAME
DATE	INTERVAL = 25/50'	1" = 500'	Prop-Map Excerpt
	NAD 27 COORDINATE SYSTEM		SHEET NO.
			5 of 5
Path W:\Projects\WORK\Greenbrier Smokeless\Duo\Duo_404_4011EID_Duo_2017\Appendix G			



CROSS SECTION (N.T.S)



PROFILE VIEW (N.T.S)

PERMENANT STREAM IMPACT

**EXHIBIT 16**

SMCRA Permit S-3009-15  
404 Permit Application  
Duo Surface Mine No. 1

**DETAIL 1**