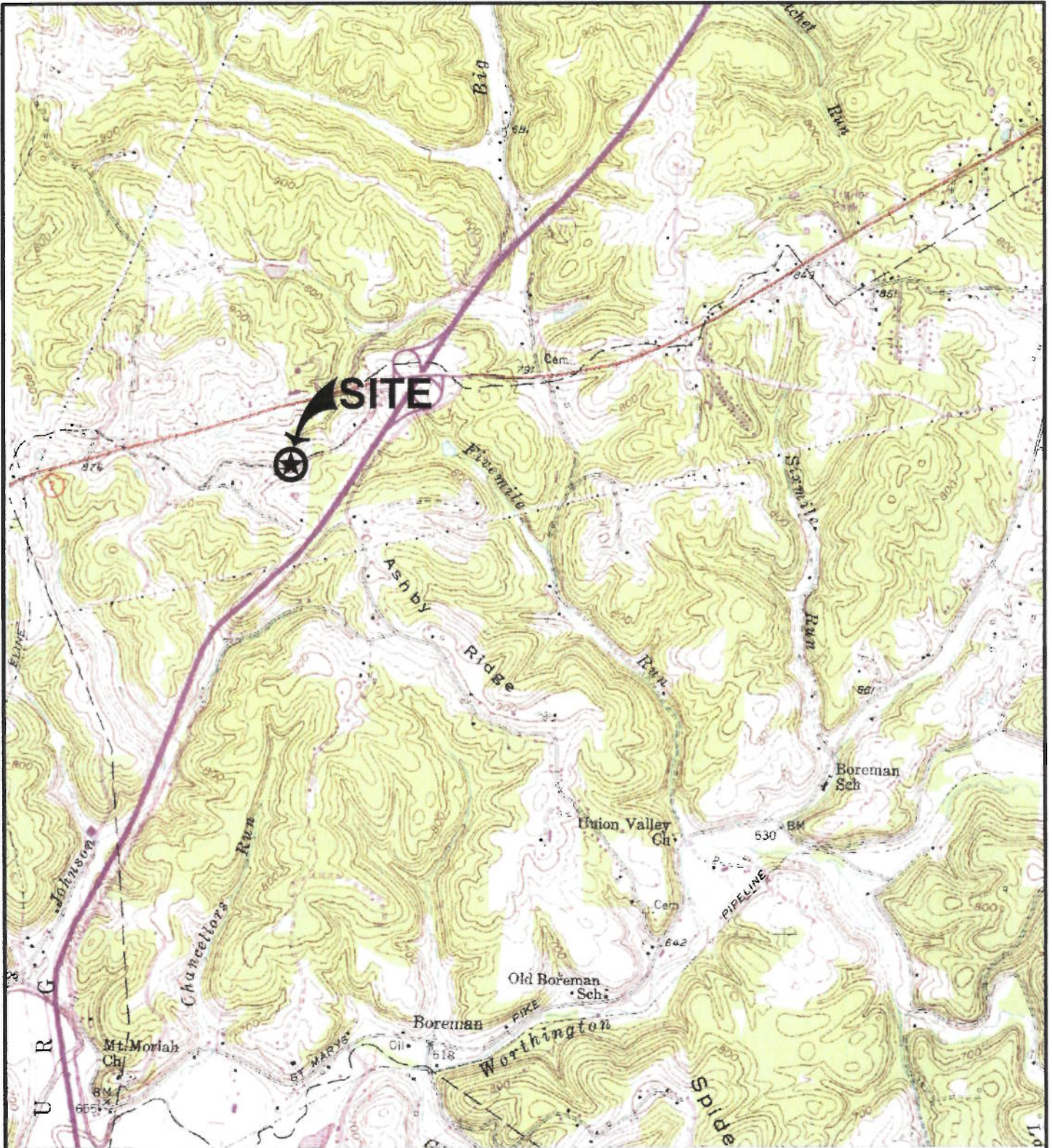


\\svr-bridgeport\projects\2015\150-237\CADD\DWG\ECO1\150237-ECO1-FIGURE 1-2.dwg(LAYOUT) LS(6,1/2016 - lcolozzi) - LP: 8/11/2016 10:42 AM



REFERENCE

- 1. U.S.G.S. 7.5' TOPOGRAPHIC MAP, VALLEY MILLS, W. VA.-OHIO, QUADRANGLE, DATED: 1957, PHOTOREVISED: 1987, PHOTOINSPECTED: 1989.
- 2. U.S.G.S. 7.5' TOPOGRAPHIC MAP, MARIETTA, OHIO-W. VA. QUADRANGLE, DATED: 1969, PHOTOREVISED: 1975, PHOTOINSPECTED: 1984.



Civil & Environmental Consultants, Inc.

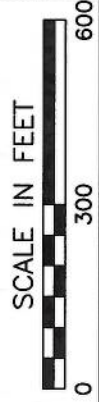
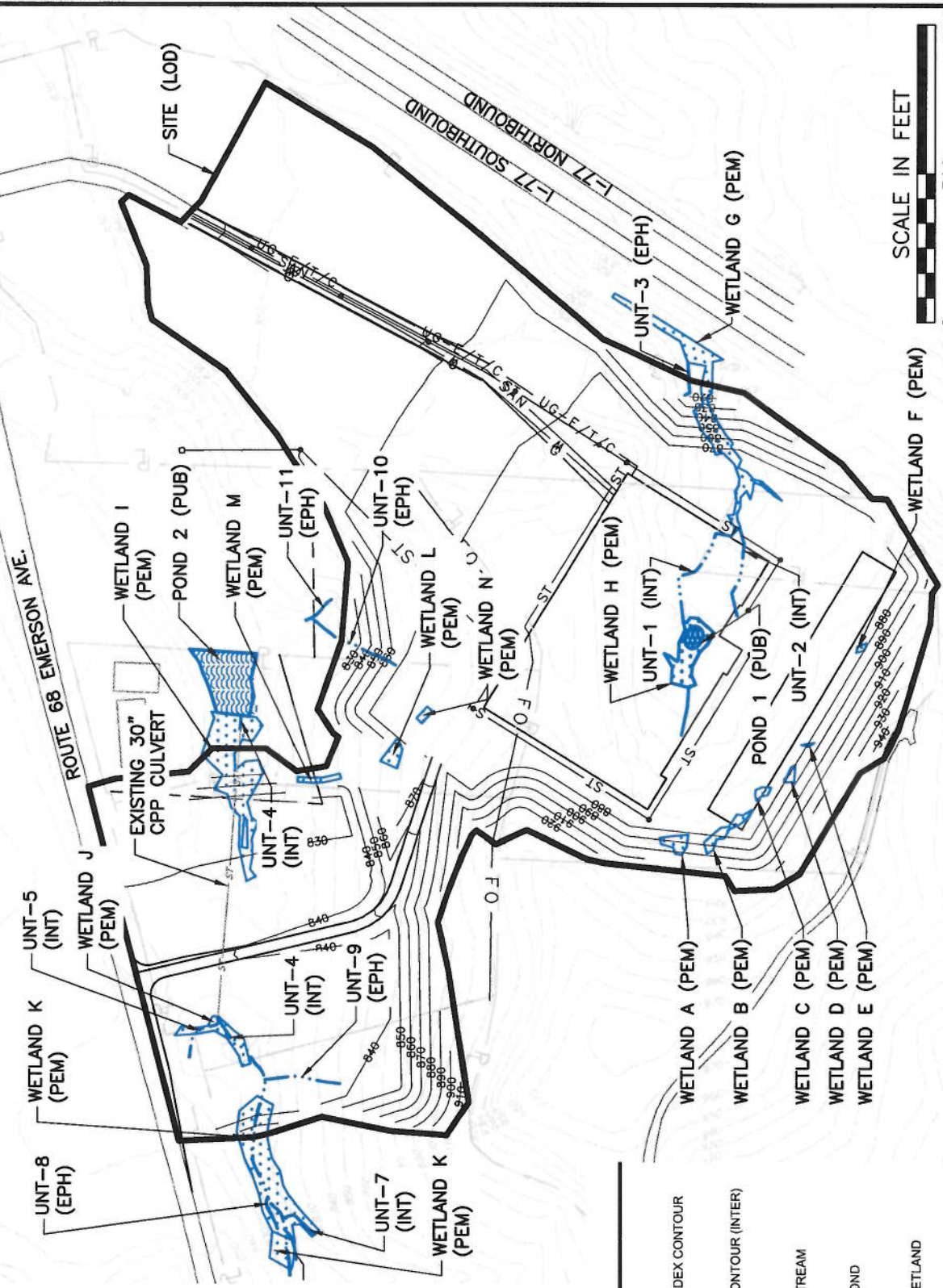
600 Marketplace Avenue - Bridgeport, WV 26330
 Ph: 304-933-3119 · Fax: 304-933-3327
 www.cecinc.com

EMERSON COMMONS, LLC
 EMERSON COMMONS
 REAL ESTATE DEVELOPMENT
 WOOD COUNTY, WEST VIRGINIA

SITE LOCATION MAP

DRAWN BY:	JCL	CHECKED BY:	JB	APPROVED BY:	*DEM	FIGURE NO.:
DATE:	JULY 2016	DWG SCALE:	1" = 2000'	PROJECT NO:	150-237	1 of 4

*HAND SIGNATURE ON FILE



LEGEND

- EXISTING INDEX CONTOUR
- EXISTING CONTOUR (INTER)
- EXISTING STREAM
- EXISTING POND
- EXISTING WETLAND
- EXISTING ROADS (PAVED)
- PROPERTY LINE
- PROPOSED INDEX CONTOURS
- PROPOSED LIMITS OF DISTURBANCE



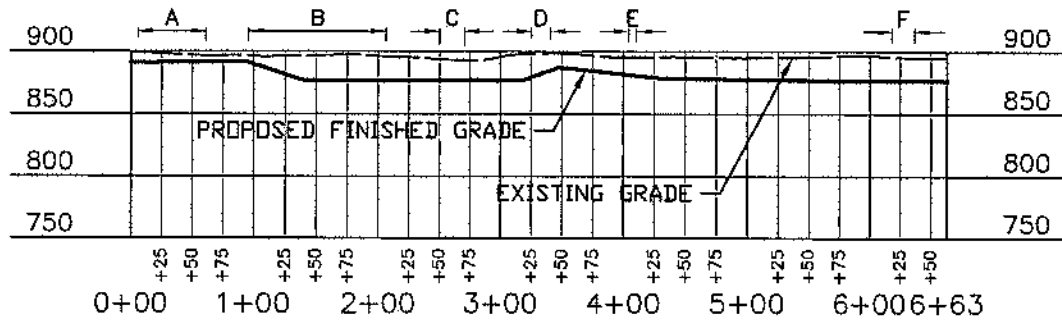
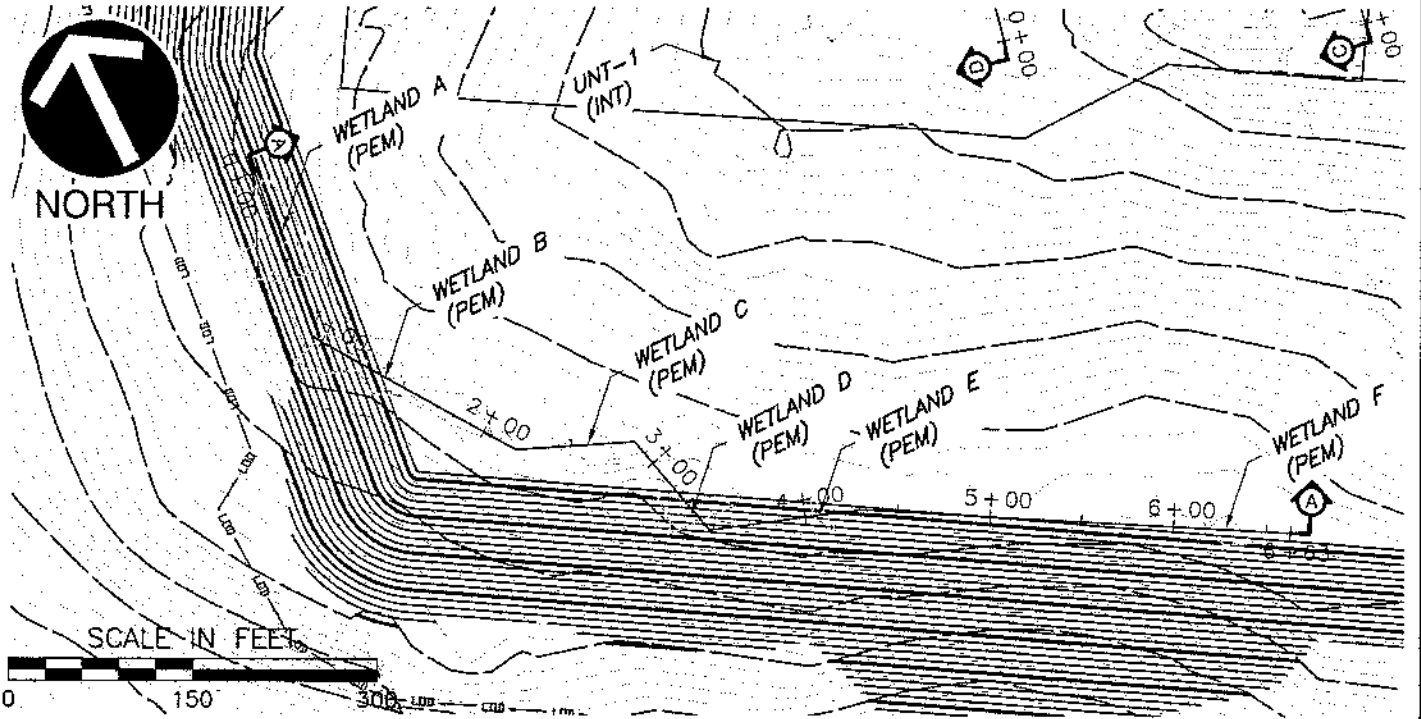
Civil & Environmental Consultants, Inc.

600 Marketplace Avenue - Bridgeport, WV 26330
 Ph: 304-933-3119 · Fax: 304-933-3327
 www.cecinc.com

EMERSON COMMONS, LLC
 EMERSON COMMONS
 REAL ESTATE DEVELOPMENT PROJECT
 WOOD COUNTY, WEST VIRGINIA
 PROPOSED SITE PLAN

DRAWN BY:	JCL	CHECKED BY:	MRH	APPROVED BY:	MRH*	FIGURE NO.:	2 of 4
DATE:	OCT 2016	DWG SCALE:	1" = 300'	PROJECT NO.:	150-237		

*HAND SIGNATURE ON FILE



SECTION A-A PROFILE

SCALE: 1"=100'

WETLAND A	PERMANENT IMPACTED AREA	0.032 AC,	CUBIC YARDS OF CUT	338 CY
WETLAND B	PERMANENT IMPACTED AREA	0.038 AC,	CUBIC YARDS OF CUT	860 CY
WETLAND C	PERMANENT IMPACTED AREA	0.012 AC,	CUBIC YARDS OF CUT	299 CY
WETLAND D	PERMANENT IMPACTED AREA	0.010 AC,	CUBIC YARDS OF CUT	268 CY
WETLAND E	PERMANENT IMPACTED AREA	0.002 AC,	CUBIC YARDS OF CUT	44 CY
WETLAND F	PERMANENT IMPACTED AREA	0.005 AC,	CUBIC YARDS OF CUT	150 CY

REFERENCE

- EXISTING CONTOURS, SITE FEATURES AND UTILITIES ARE DERIVED FROM AERIAL MAPPING AND UPDATED BY FIELD SURVEY CONDUCTED BY CIVIL & ENVIRONMENTAL CONSULTANTS, INC.
- POND, WETLAND AND STREAM LOCATIONS BASED ON DELINEATIONS CONDUCTED BY CIVIL & ENVIRONMENTAL CONSULTANTS, INC. ON MAY 19, 2014.



Civil & Environmental Consultants, Inc.

600 Marketplace Avenue - Bridgeport, WV 26330
 Ph: 304-933-3119 · Fax: 304-933-3327
 www.cecinc.com

EMERSON COMMONS, LLC
 EMERSON COMMONS
 REAL ESTATE DEVELOPMENT
 WOOD COUNTY, WEST VIRGINIA

WETLANDS A-F

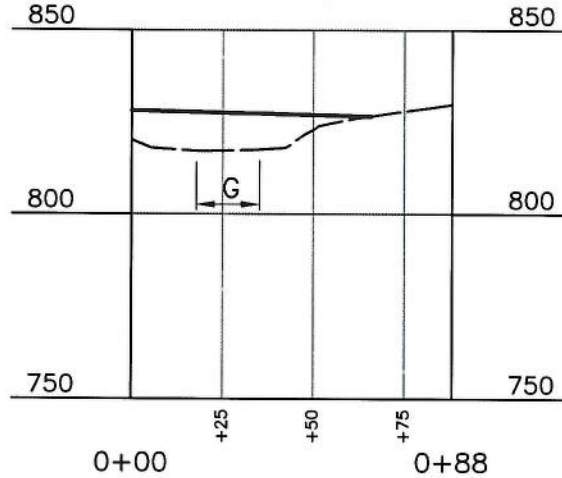
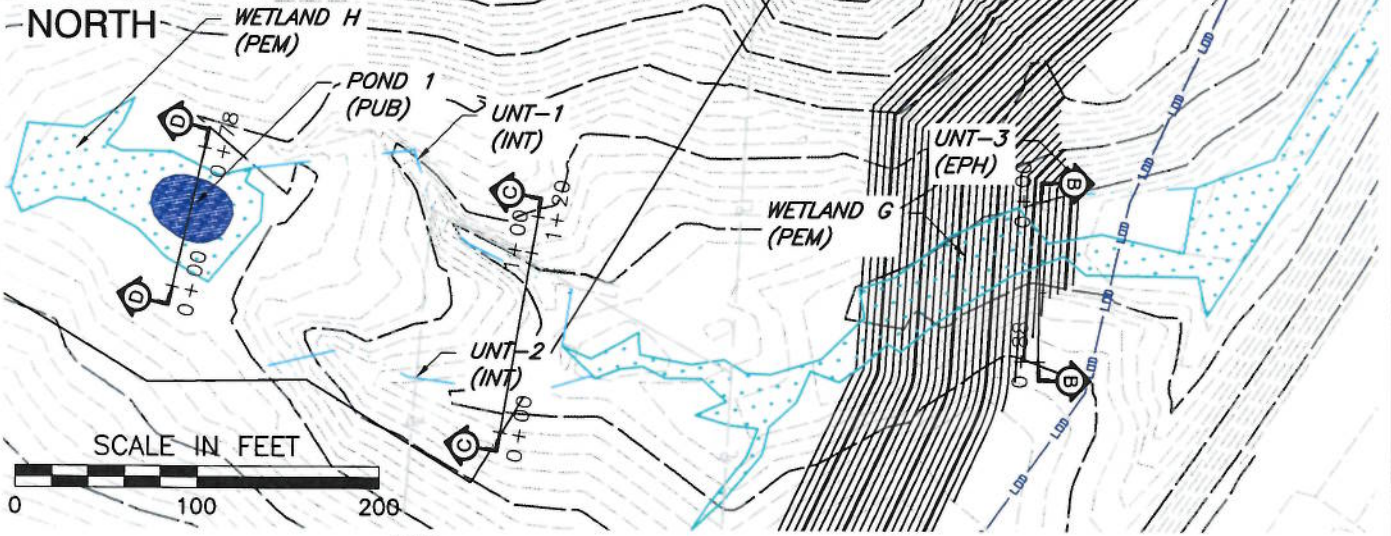
DRAWN BY:	LG	CHECKED BY:	MRH	APPROVED BY:	MRH*	FIGURE NO.:
DATE:	AUGUST 2016	DWG SCALE:	1" = 150'	PROJECT NO.:	150-237	3 of 4

*HAND SIGNATURE ON FILE

I:\svr-bridgeport...objects\2015\150-237-CADD\DWG\ECO1\150237-ECO1-FIGURE 9-20.dwg(8) LS:(8/12/2016 4:41 PM) - LP: 8/12/2016 4:41 PM



NORTH



SECTION B-B PROFILE

SCALE: 1"=50'

WETLAND G PERMANENT IMPACTED AREA 0.161 AC
CUBIC YARDS OF FILL 3332 CY

REFERENCE

- EXISTING CONTOURS, SITE FEATURES AND UTILITIES ARE DERIVED FROM AERIAL MAPPING AND UPDATED BY FIELD SURVEY CONDUCTED BY CIVIL & ENVIRONMENTAL CONSULTANTS, INC.
- POND, WETLAND AND STREAM LOCATIONS BASED ON DELINEATIONS CONDUCTED BY CIVIL & ENVIRONMENTAL CONSULTANTS, INC. ON MAY 19, 2014.



Civil & Environmental Consultants, Inc.

600 Marketplace Avenue - Bridgeport, WV 26330
Ph: 304-933-3119 · Fax: 304-933-3327
www.cecinc.com

EMERSON COMMONS, LLC
EMERSON COMMONS
REAL ESTATE DEVELOPMENT
WOOD COUNTY, WEST VIRGINIA

WETLAND G

DRAWN BY:	LG	CHECKED BY:	MRH	APPROVED BY:	MRH*	FIGURE NO.:
DATE:	AUGUST 2016	DWG SCALE:	1" = 100'	PROJECT NO:	150-237	

*HAND SIGNATURE ON FILE

4 of 4

P:\2015\150-237\1-CADD\Drawg\EC01\150237-EC01-FIGURE 9-20.dwg\10 LS:(8/17/2016 - 10:53 AM) - LP: 8/17/2016 9:53 AM