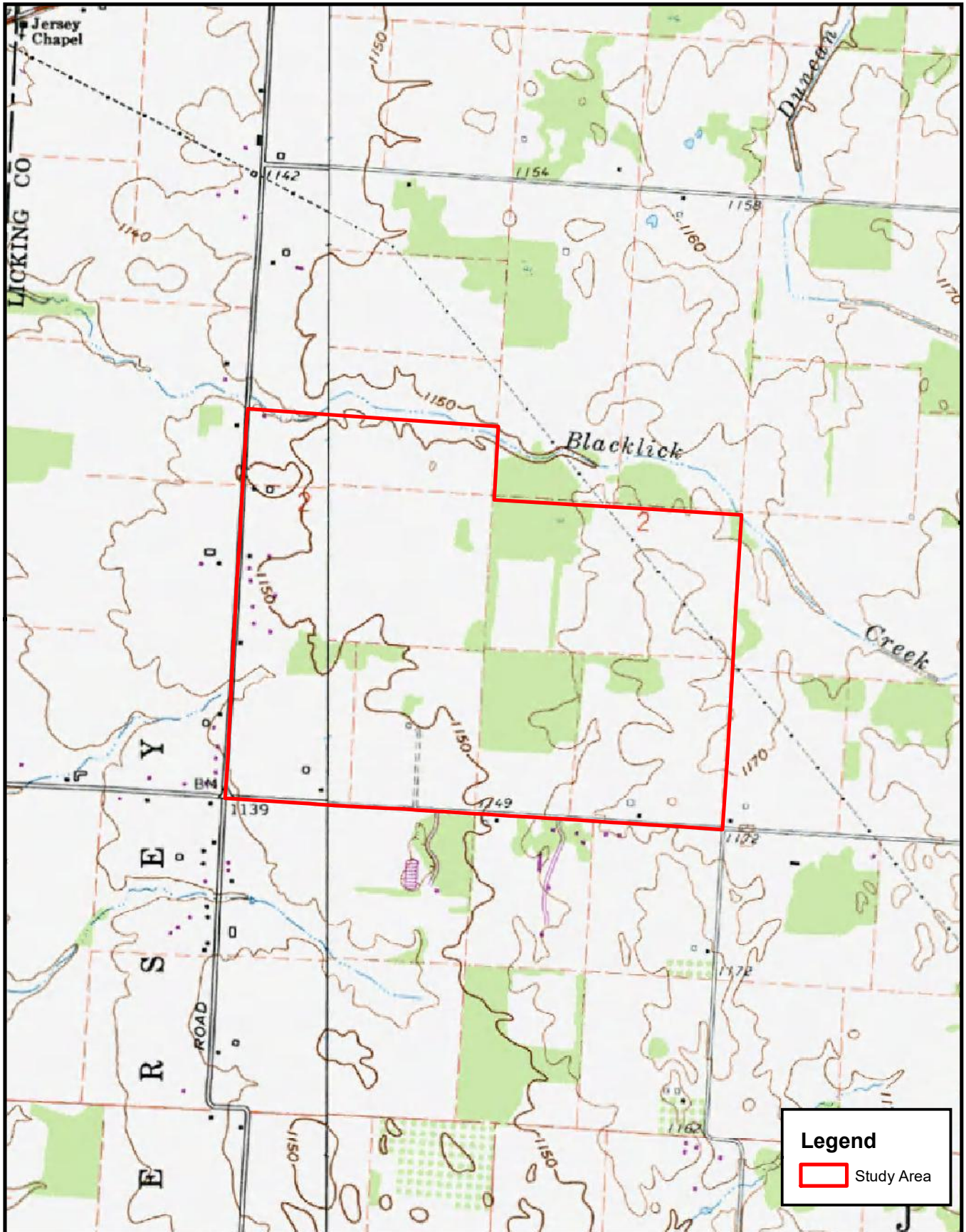


Path: J:\20180671\GIS\Exhibit 2 - USGS.mxd

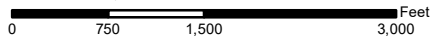


Engineers • Surveyors • Planners • Scientists
 5500 New Albany Road, Columbus, OH 43054
 Phone: 614.775.4500 Toll Free: 888.775.3648
 emht.com

JERSEY TOWNSHIP, LICKING COUNTY, OHIO

North of Jug Street Properties
USGS Topographic Map
Exhibit 2

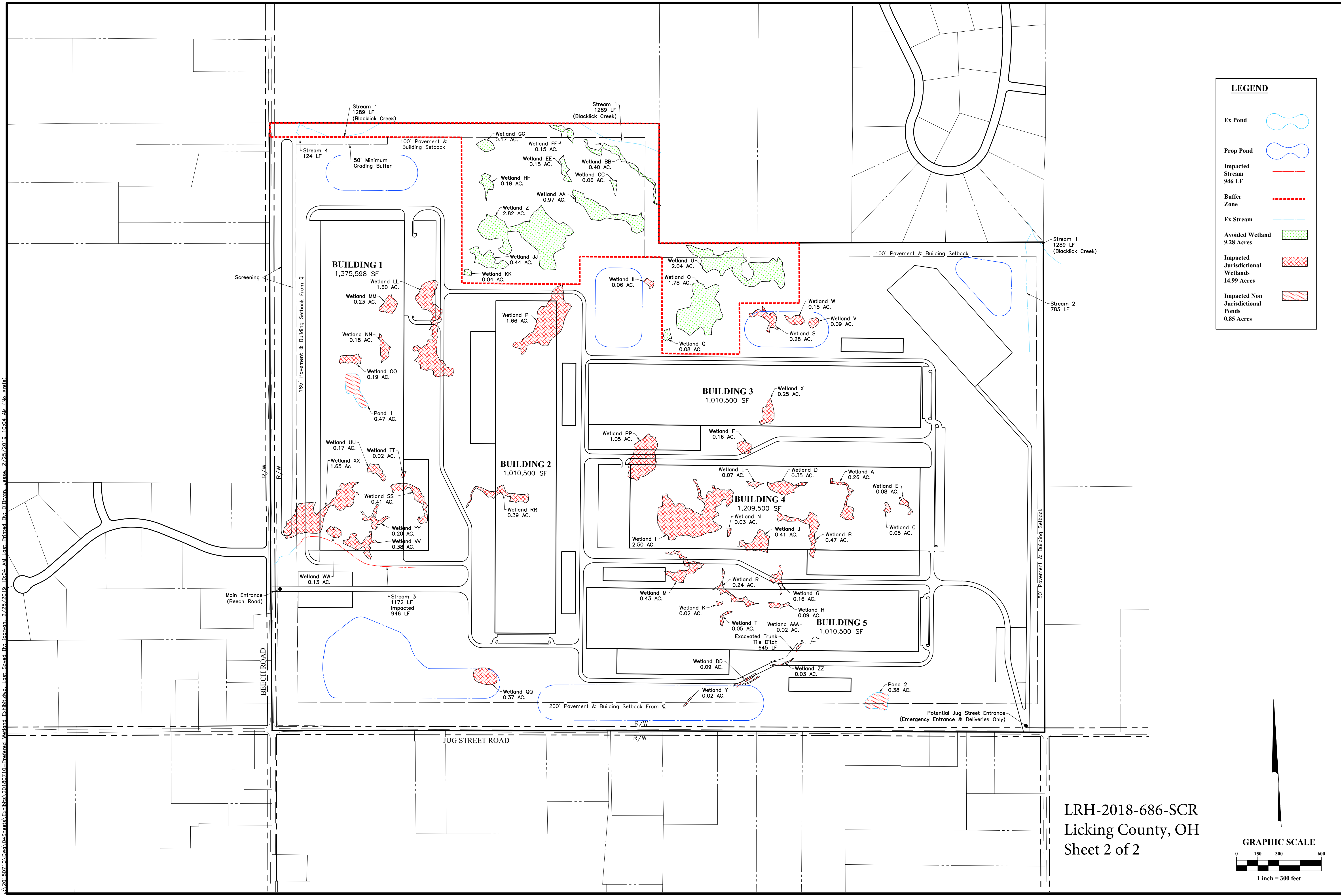
SCALE: 1" = 1,500'



Source: USGS New Albany Quad Map (Pub. 1983) &
 USGS Jersey Quad Map (Pub. 1975)



I:\2018\2018-686-SCR\20180710_Pref\Wetland_Exhibit.dwg - Last Saved By: jbrayon - 2/25/2019 10:04 AM - Last Printed By: O'Brian - 2/25/2019 10:04 AM (No Xrefs)



MARK	DATE	DESCRIPTION

CITY OF NEW ALBANY, LICKING COUNTY, OHIO
 PREFERRED EXHIBIT
 FOR
PROJECT JUG STREET

EMHT
 Earth Mechanics & Technology, Inc.
 Engineers • Surveyors • Planners • Scientists
 5800 New Albany Road, Columbus, OH 43254
 Phone: 614.757.5500 Fax: 614.757.5501
 emht.com

DATE	February 25, 2019
SCALE	1" = 300'
JOB NO.	20180710
SHEET	EXHIBIT 10

LRH-2018-686-SCR
 Licking County, OH
 Sheet 2 of 2

