

REFERENCES:
 ArcGIS map service World Street Map retrieved 1/21/15
 Available at: http://services.arcgis.com/ArcGIS/rest/services/World_Street_Map/MapServer

Legend
 [Symbol] STUDY AREA



Alliance Consulting, Inc.
Engineers · Constructors · Scientists
 124 PHILPOTT LANE
 BEAVER, WV 25813
 (304) 255-0491

PROJECT LOCATION MAP
SEWELL VALLEY #2 MINE
 PREPARED FOR
 WARRIOR ENERGY RESOURCES
 III FREEPORT ROAD, PITTSBURGH, PA 15215

DRAWN BY	DR	1/7/15
CHECKED BY	JRB	1/7/15
APPROVED BY		
DRAWING NUMBER		
B14-212-A1		

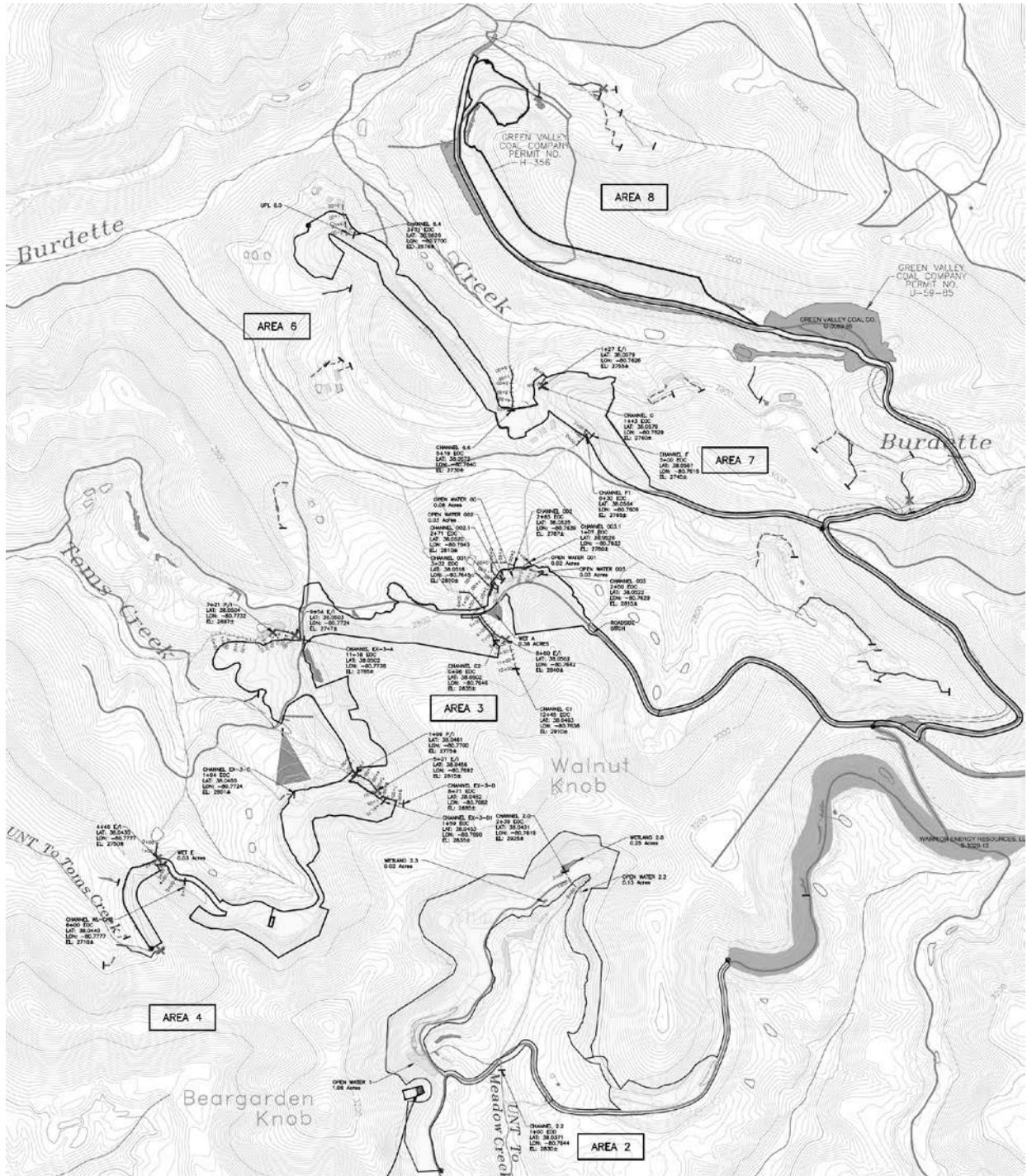


EXHIBIT B: PROJECT AREA AND WATERS OF THE U.S.

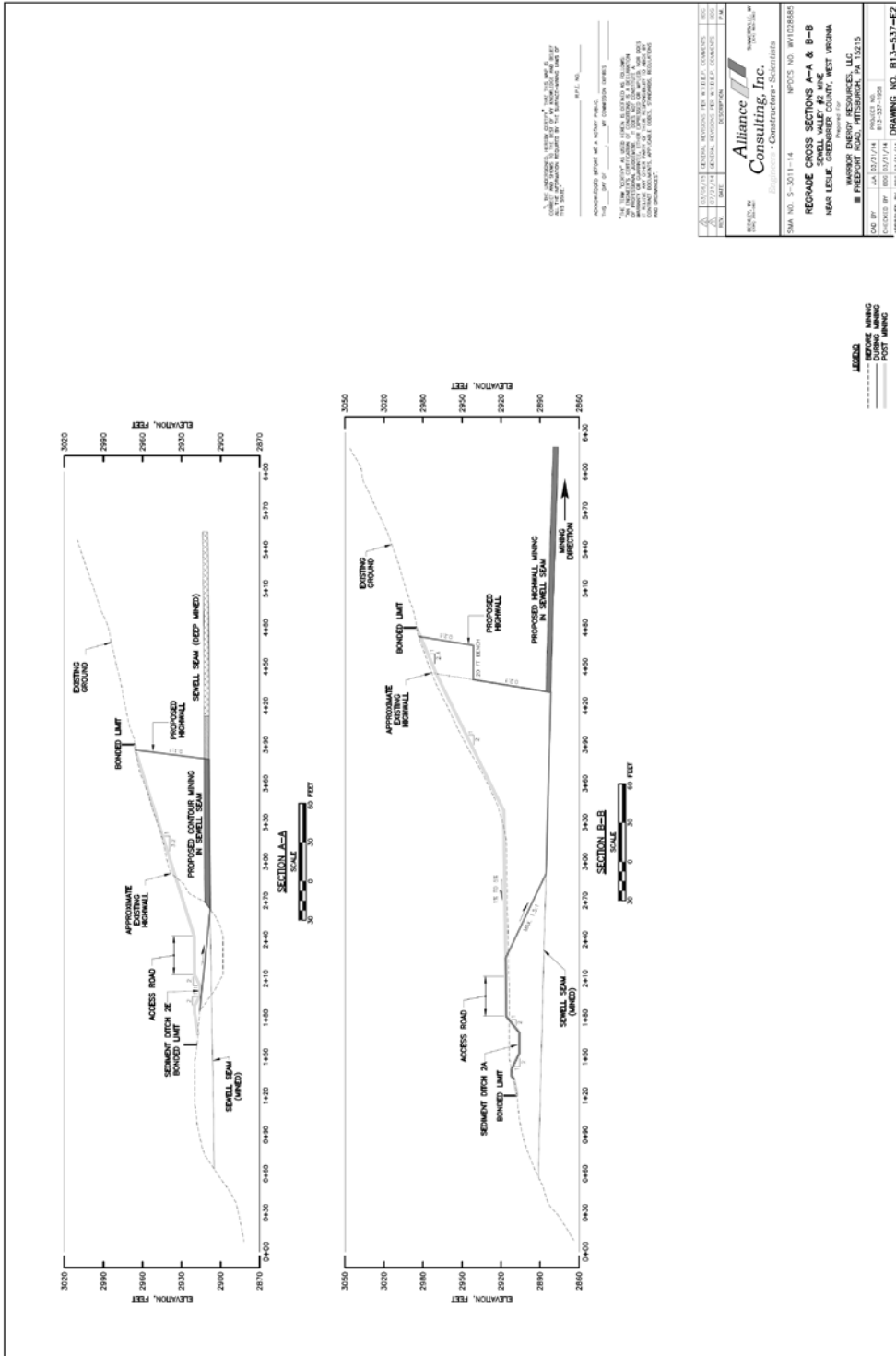


EXHIBIT C: Cross Section View of Project Plans

DATE	DESCRIPTION	BY
01/14/14	REVISION	AW
01/14/14	REVISION	AW
01/14/14	REVISION	AW

Alliance Consulting, Inc.
 10000 W. 10th Street, Suite 100
 Overland Park, KS 66211
 Phone: 913.331.7174
 Fax: 913.331.7175
 Email: info@alliance-ks.com

PROJECT:
 REGRABE CROSS SECTIONS A-A & B-B
 NEAR LESLIE CREEK, SWELL VALLEY #2 MINE
 NEAR LESLIE CREEK, SWELL VALLEY #2 MINE
 PROJECT NO. 1010226585

CLIENT:
 WINDY ENERGY RESOURCES, LLC
 10000 W. 10th Street, Suite 100
 Overland Park, KS 66211
 Phone: 913.331.7174
 Fax: 913.331.7175
 Email: info@windyenergy.com

APPROVED BY: 1010226585
DRAWING NO.: B13-537-E2

Table 1. Proposed Discharge of Dredged and/or Fill Material into Streams					
Stream Location	Stream Length		Stream Habitat Score*	Conductivity	WVSCI**
	Ephemeral	Intermittent			
Stream Channel 2.0	188.7	0	102		
Stream Channel 001	0	67.8	120	164	60.6
Stream Channel 002.1	0	74.7	129	164	60.6
Stream Channel 003	250	0	88**		
Stream Channel 003.1	15.5	0	88**		
Stream Channel Ex-3-C	26	0	88**		
Stream Channel Ex-3-D	0	50	144	18.1	81.1
Stream Channel Ex-3-D1	50	0	88**		
Stream Channel 6.6	0	18.6	142	88.1	53
Stream Channel F	0	155	129	164.5	60.7
TOTAL	580 ft	316 ft			
	896 ft				

* Using EPAs *Rapid Bioassessment Protocols for Streams and Wadeable Rivers*.

** *West Virginia Stream Condition Index (WVSCI)*

Table 2. Proposed Discharge of Dredged and/or Fill Material into Ponds	
LOCATION & TYPE OF FILL	Acres
Open Water 1 (on-bench farm pond)	1.06
Open Water 2.2 (on-bench pond)	0.04
Open Water 00 (on-bench pond)	0.08
Open Water 001 (on-bench pond)	0.02
Open Water 002 (on-bench pond)	0.03
Open Water 003 (on-bench pond)	0.03
TOTAL	1.26 acres

Table 3. Proposed Discharge of Dredged and/or Fill Material into Wetlands		
Wetland Name	Type	Acres
Wetland 2.0	Emergent	0.25
Wetland 2.3	Emergent	0.02
TOTAL		0.27

EXHIBIT D: Waters of the U.S. That Would Be Impacted by the Proposed Discharge of Dredged and/or Fill Material.

STREAM MITIGATION EXISTING CONDITIONS							PREDICTED FUTURE CONDITIONS			
Location	MITIGATION Stream	Length		HA Score	C	WVSCI	Length	Habitat Assessment Year 10/ Year 30	Conductivity Year 10/ Year 30	WVSCI Year 10/ Year 30
		E	I							
AREA 1	Stream C-1: Rehabilitate	0	62	125	38.9	57.5	62 ft Intermittent	165/174	38.9/ 38.9	70/78
AREA 1	Stream C1 Eph Pre: Preservation Only	385	0	106	54.4	-	385 ft Ephemeral	109/114	-	-
AREA 1	Stream C2-Res: Rehabilitate	100	0	73	38.9	-	100 ft Ephemeral	101/112	38.9/38.9	-
AREA 3	WL-CH2-Res: Rehabilitate	350	0	73	31.9	-	350 ft Ephemeral	100/110	54/54	-
AREA 3	WL-CH2-Est: Establish (Create)	0	0	-	-	-	330 ft Ephemeral	104/114	54/54	-
TOTALS		835	62				1,227 ft			
		897 ft								

PROPOSED WETLAND MITIGATION				
Location	Wetland Name	Mitigation Type	Wetland Type	Acres
AREA 1	Wetland C-1	Establish	Emergent	0.278 acre
AREA 2	Wetland C	Preservation Only	Emergent	0.466 acre
TOTAL				0.744 acre

EXHIBIT E: Summary of Proposed Compensatory Mitigation.

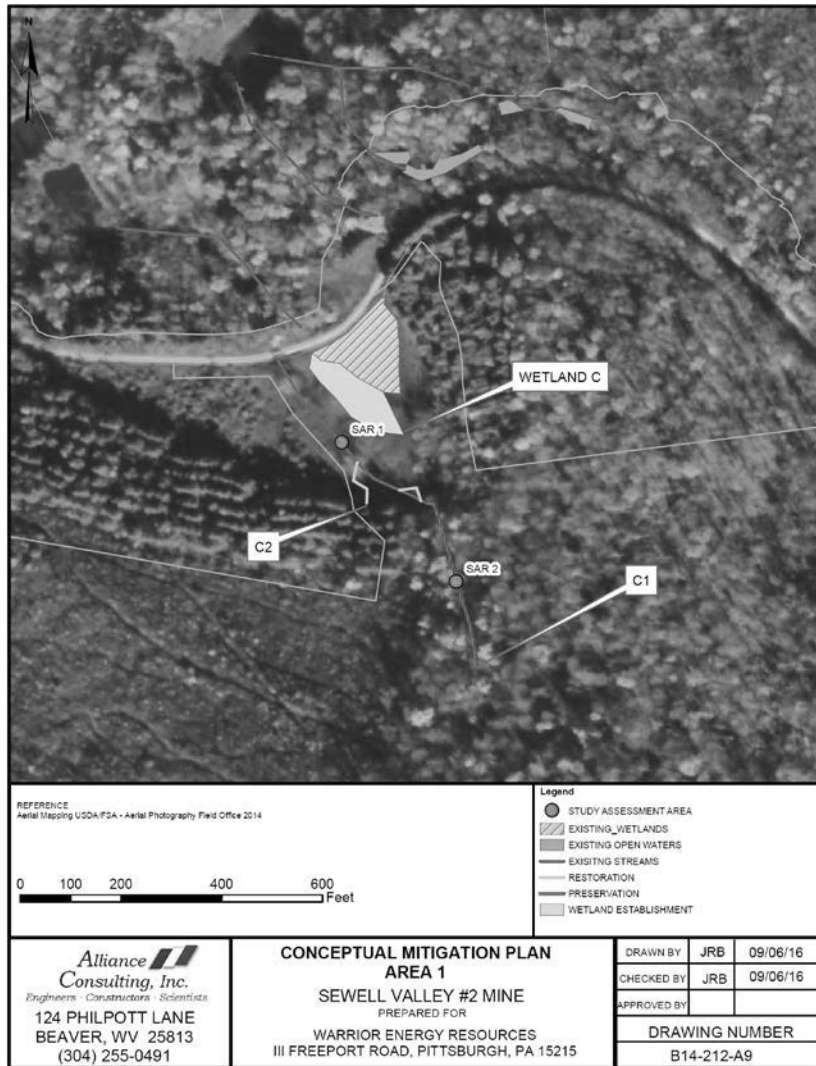


EXHIBIT F-1: Location of Compensatory Mitigation Sites



EXHIBIT F-2: Location of Compensatory Mitigation Sites

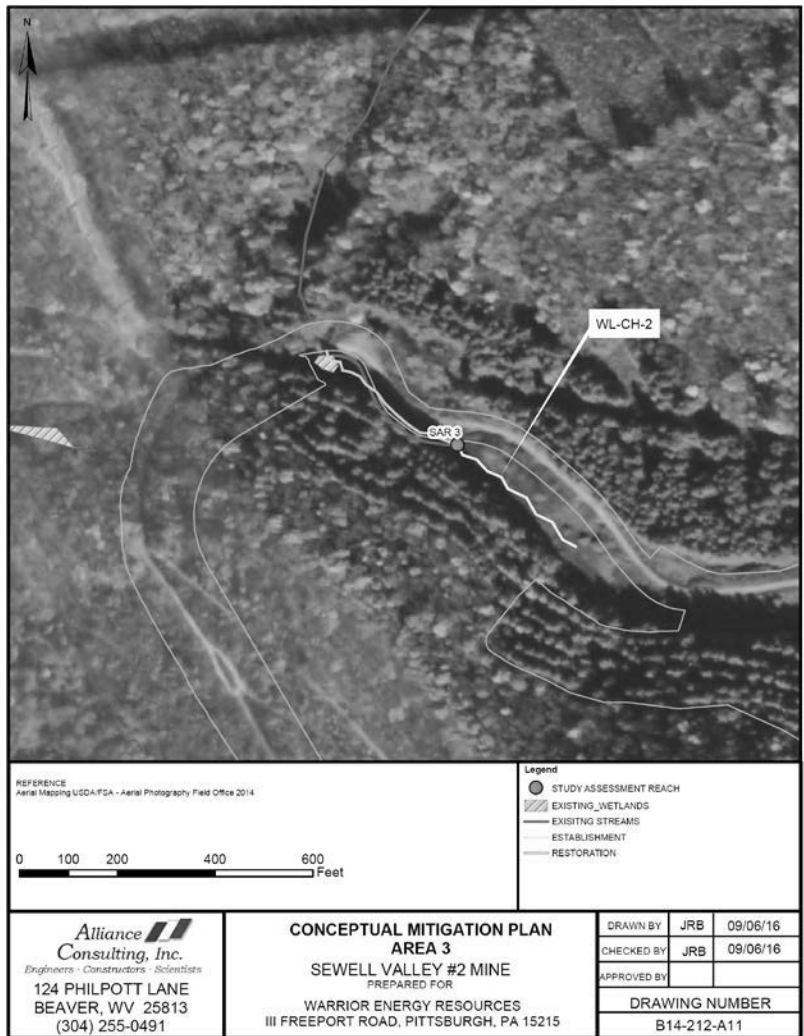


EXHIBIT F-3: Location of Compensatory Mitigation Sites.