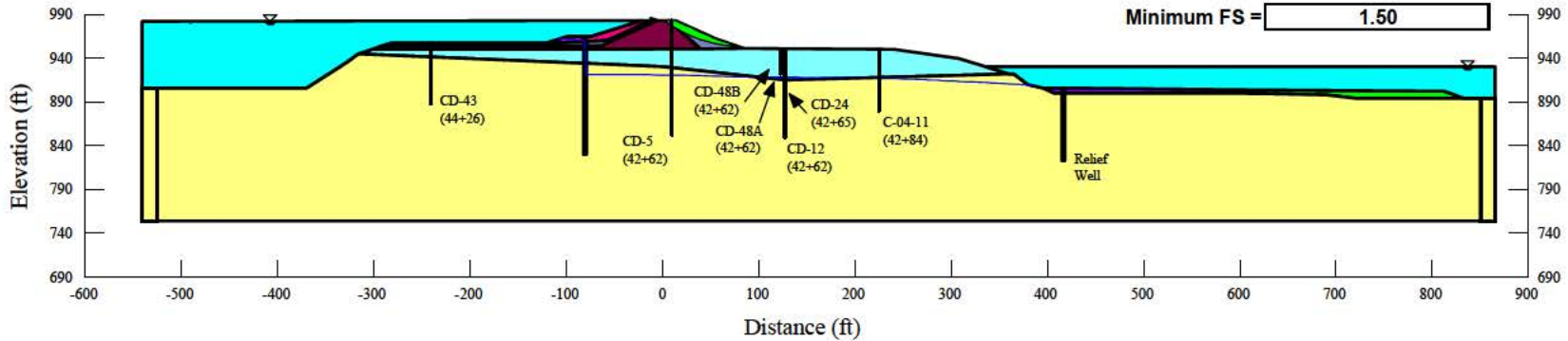


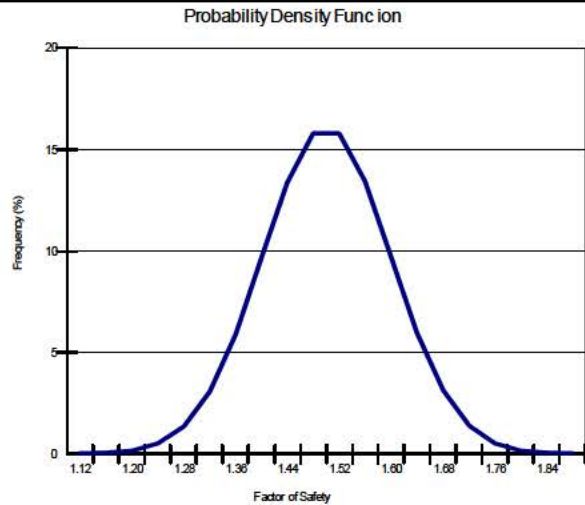
Bolivar Dam Slope Stability, Deterministic and Probabilistic Analysis - Rehab Condition

Station	Pool Elevation (ft)	Tail Elevation (ft)
43+00	982	930

Deterministic Model Predictions



Probabilistic Model Predictions



E(FS) =	1.50
σ (FS) =	0.10
FS limit =	1.00

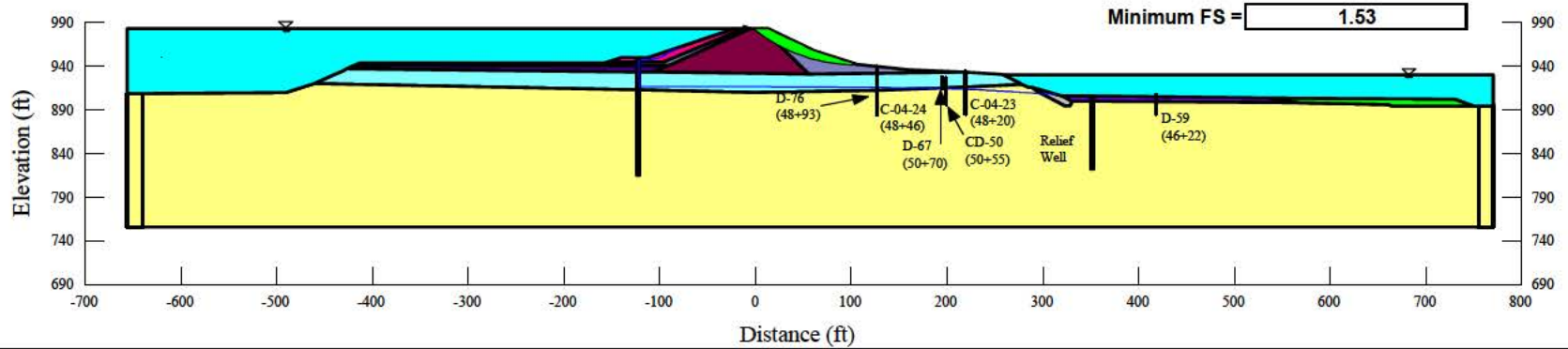
β =	5.0
Pr(u) =	0.00000%
R =	100.00000%

E(FS) = expected (mean) value for FS; σ (FS) = standard deviation for FS; FS limit = FS limit state
 Pr(u) = probability of unsatisfactory performance = probability that FS against slope stability is less than 1.0; R = reliability = 1-Pr(u); β = reliability index

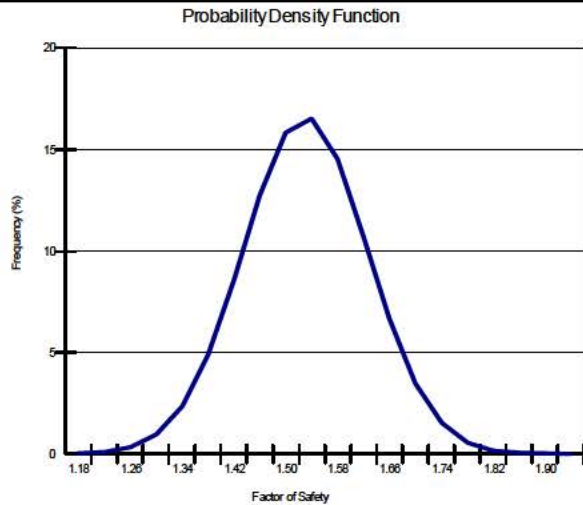
Bolivar Dam Slope Stability, Deterministic and Probabilistic Analysis - Rehab Condition

Station	Pool Elevation (ft)	Tail Elevation (ft)
49+00	982	930

Deterministic Model Predictions



Probabilistic Model Predictions



E(FS) =	1.53
σ (FS) =	0.1
FS limit =	1.00

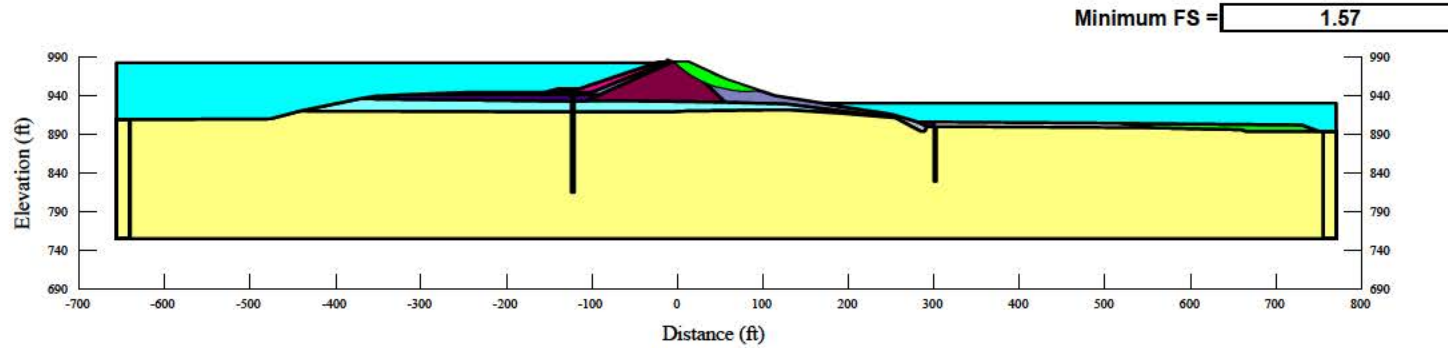
β =	5.5
Pr(u) =	0.00000%
R =	100.00000%

E(FS) = expected (mean) value for FS; σ (FS) = standard deviation for FS; FS limit = FS limit state
 Pr(u) = probability of unsatisfactory performance = probability that FS against slope stability is less than 1.0; R = reliability = 1-Pr(u); β = reliability index

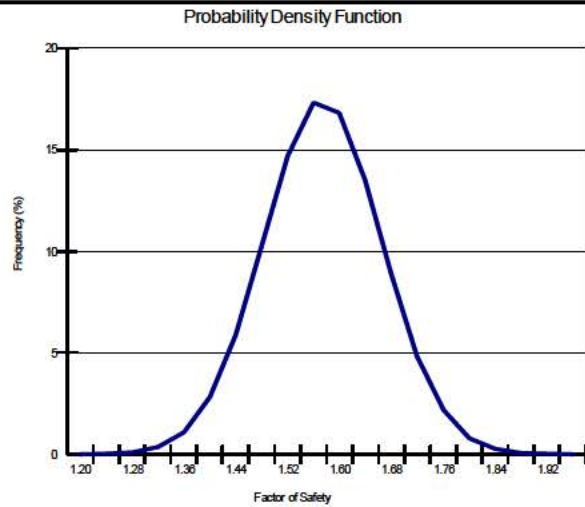
Bolivar Dam Slope Stability, Deterministic and Probabilistic Analysis - Rehab Condition

Station	Pool Elevation (ft)	Tail Elevation (ft)
51+00	982	930

Deterministic Model Predictions



Probabilistic Model Predictions



E(FS) =	1.57
σ (FS) =	0.09
FS limit =	1.00

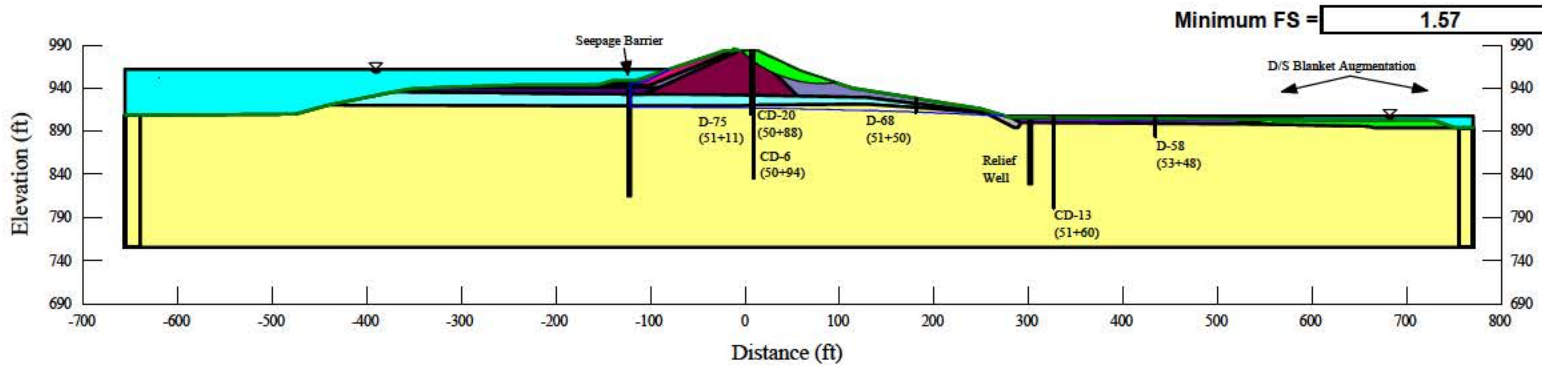
β =	6.3
Pr(u) =	0.00000%
R =	100.00000%

E(FS) = expected (mean) value for FS; σ (FS) = standard deviation for FS; FS limit = FS limit state
 Pr(u) = probability of unsatisfactory performance = probability that FS against slope stability
 is less than 1.0; R = reliability = 1-Pr(u); β = reliability index

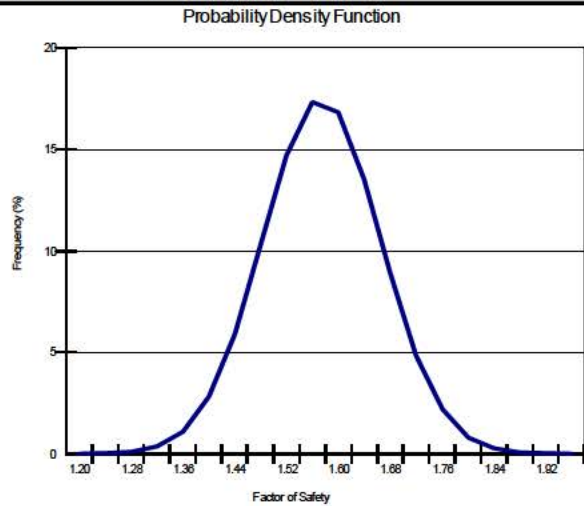
Bolivar Dam Slope Stability, Deterministic and Probabilistic Analysis - Rehab Condition

Station	Pool Elevation (ft)	Tail Elevation (ft)
51+00	964	908.5

Deterministic Model Predictions



Probabilistic Model Predictions



E(FS) =	1.57
σ (FS) =	0.09
FS limit =	1.00

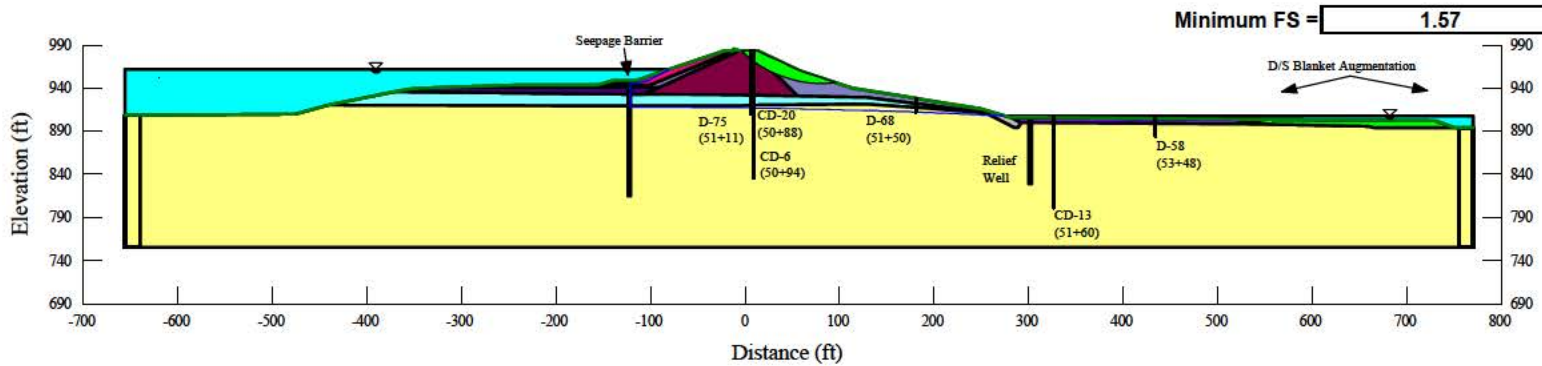
β =	6.3
Pr(u) =	0.00000%
R =	100.00000%

E(FS) = expected (mean) value for FS; σ (FS) = standard deviation for FS; FS limit = FS limit state
 Pr(u) = probability of unsatisfactory performance = probability that FS against slope stability
 is less than 1.0; R = reliability = 1-Pr(u); β = reliability index

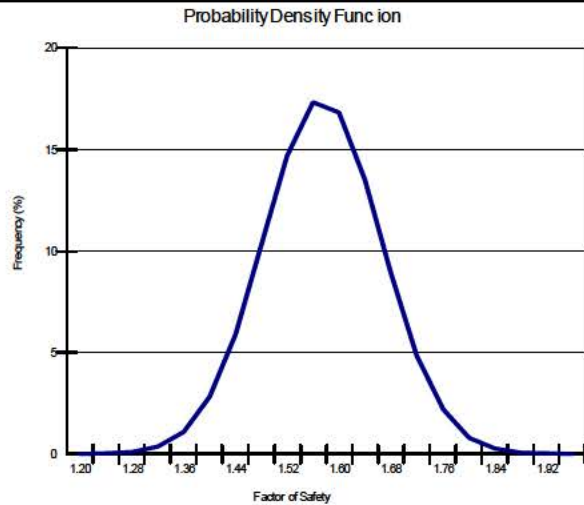
Bolivar Dam Slope Stability, Deterministic and Probabilistic Analysis - Rehab Condition

Station	Pool Elevation (ft)	Tail Elevation (ft)
51+00	962	908.5

Deterministic Model Predictions



Probabilistic Model Predictions



E(FS) =	1.57
σ (FS) =	0.09
FS limit =	1.00

β =	6.3
Pr(u) =	0.00000%
R =	100.00000%

E(FS) = expected (mean) value for FS; σ (FS) = standard deviation for FS; FS limit = FS limit state
 Pr(u) = probability of unsatisfactory performance = probability that FS against slope stability
 is less than 1.0; R = reliability = 1-Pr(u); β = reliability index