

Public Safety is the #1 Priority of the U.S. Army Corps of Engineers

Ongoing construction at Bluestone Dam is being conducted to increase the stability of Bluestone Dam and reduce life-safety risks.

Bluestone Dam reduces flood risk throughout the New and Kanawha River Valley all the way to the Ohio River and beyond, including the State Capital of Charleston, West Virginia.



Without further investment, the dam will continue to pose an unacceptable risk of failure, causing catastrophic consequences downstream including significant loss of life, and emptying Bluestone Lake permanently.



For More Information:

<https://www.lrh.usace.army.mil/Missions/Civil-Works/Current-Projects/Bluestone-DSA/>



Please Scan the QR Code Above With Your Smart Device for Direct Access to Project Website



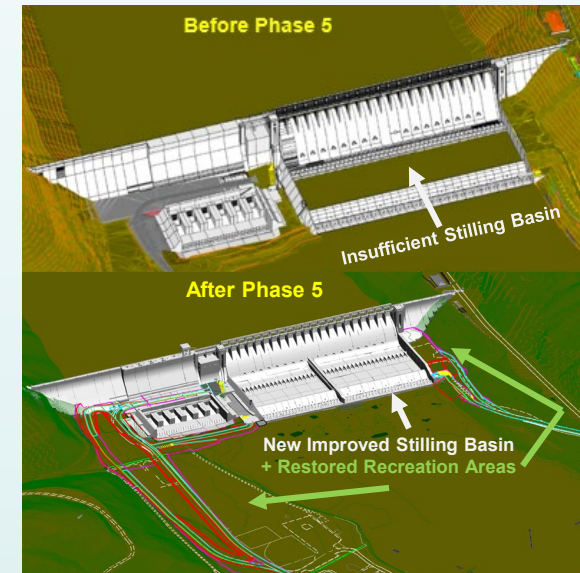
**US Army Corps
of Engineers.**
Huntington District
BUILDING STRONG®

For more information, please visit
www.FloodSmart.gov in addition to
www.LivingNearDams.org.



**US Army Corps
of Engineers®**
Huntington District

Bluestone Dam Safety Assurance Project PHASE 5

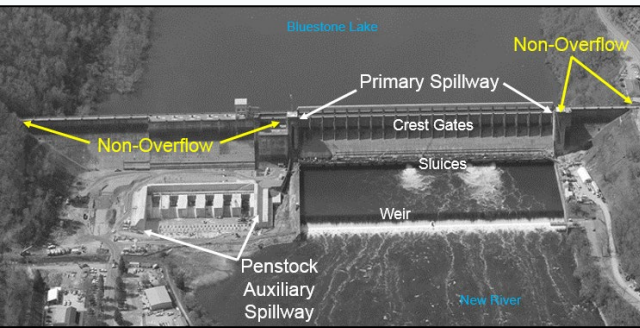


- The final phase of construction to reduce significant life safety risks has begun.
- Construction will continue thru the 2020s.
- **PHASE 5** will alter the area where water is discharged everyday to pass extreme storms.

As a result a number of changes will occur during the construction.

Where & When is Construction Occurring?

- Starting in 2019, the U.S. Army Corps of Engineers begins construction on the primary spillway (just downstream) of Bluestone Dam.
- The construction will be completed in two stages to reconfigure and improve the primary spillway where water is discharged everyday (see diagrams below).
- Most of the work will take place in the primary spillway. However, adjacent land will be required for laydown and related activities.
- Land adjacent to the dam will be restored with facilities for the public after Phase 5.
- It is anticipated Phase 5 will continue thru the 2020s.



CHANGES YOU WILL SEE DURING CONSTRUCTION

- 1) As early as 2020, the dam's routine outflow will be reduced so that the lake will go out of pool anytime flows coming into the lake equals or exceeds 10,000 cubic feet per second. As result, Bluestone's Lake level will change more frequently. Boat ramps, parking lots, campgrounds and other features of Bluestone State Park and Wildlife Management Area will flood more often at higher levels and for longer times. This condition will return to normal after construction.
- 2) As early as 2020, the fishing pier located off State Route 20 will be closed to the public and taken down as this area will be required to a reconfigure the primary spillway. A new fishing pier will be established following work in the stilling basin. In the meantime, a new fishing pier has been added to the Bluestone State Park and additional access to the New River has been added at Belle Point Park.
- 3) As early as 2020, the area were Packs Branch empties into the New River will be closed to the public due to construction activity. The area will be re-opened following construction in an improved condition.
- 4) The area near Belle Point Park currently used for construction laydown will be restored with features, such as playgrounds, a second Little League ball field, day use areas and comfort stations.

