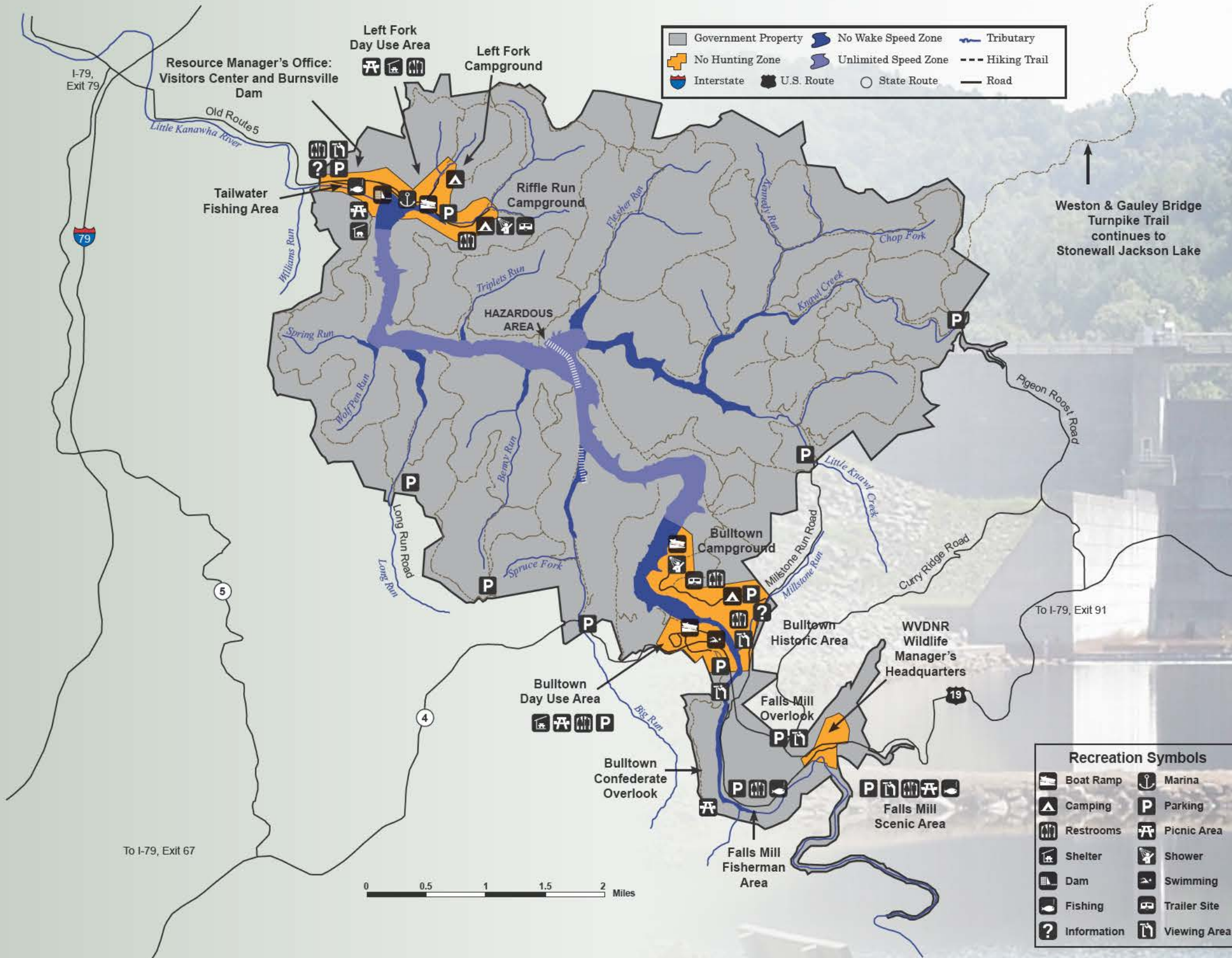




US Army Corps of Engineers

Burnsville Lake



Government Property	No Wake Speed Zone	Tributary
No Hunting Zone	Unlimited Speed Zone	Hiking Trail
Interstate	U.S. Route	State Route
		Road

Recreation Symbols	

Picturesque Burnsville Lake, one of central West Virginia's key attractions, offers visitors a wide variety of activities such as fishing, boating, camping, hunting, biking, and picnicking. The project has 13,224 acres of land and attracts about ¼ million visitors annually.

Burnsville Dam is located in Braxton County on the Little Kanawha River, 124 miles above its confluence with the Ohio River and approximately 3 miles above the Town of Burnsville, West Virginia.

It was developed to reduce flooding on the Little Kanawha River, which runs 167 miles and drains an area of 2,320 square miles, and is a unit in the Corps' Ohio River Basin Flood Reduction System.

Under normal conditions, precipitation runoff caught by the lake is simply passed through the dam by adjusting gate openings. Following a significant storm, water is held back to reduce flooding downstream. After the danger of flooding has passed, excess storage is released as rapidly as possible.

The dam was authorized by the Flood Control Act of 1938. Construction began in 1972, and the dam became operational for flood control in December 1978.

The dam is a combination of earthen fill and concrete structures that is 90 feet high and 1,400 feet long. The earthen fill section has an impervious clay core. The concrete section contains the spillway and outlet works.

The summer pool elevation is maintained from April through October. Lowering of the pool by 13 feet, to provide additional flood storage, begins in early November and continues until winter pool elevation is reached. This winter pool elevation is maintained through March each year.



Riffle Run Day-Use Area

Located near Burnsville Dam, Riffle Run Day-use Area is easily accessible from 1-79, Exit 79. The area offers a launch ramp, picnic shelters, horseshoe pits, ball field, playgrounds, restrooms, and fishing areas. Accessible facilities are available. A privately operated marina concession is also located in this area.

Riffle Run Campground

Riffle Run Campground is located near the dam and marina. Fifty-four first class campsites are located in a partially wooded area and have electric, water and sewer hookups. Six primitive sites are also available. The area has accessible shower/restroom facilities, a playground, a sewage dump station, nearby fishing, boating, and other water recreational opportunities, hiking, and hunting. Reservations are not accepted. In this area, host, cleaning, and mowing services are normally performed by volunteers.

Bulltown Day-Use Area

Easy access to the headwaters and Bulltown Recreation Areas is available from 1-79, Exit 67 if traveling Northbound and 1-79, Exit 91 if traveling Southbound. The area includes a swimming beach, which has accessible restrooms and change booths. It is near the campground and historic area at Bulltown. A boat launch ramp, fishing access, picnic shelters, horseshoe pits, and a playground are available. The

Civil War Confederate Overlook is also located nearby.

Bulltown Campground

Bulltown Campground is located off 1-79, Exit 91 (if Southbound) or Exit 67 (if Northbound). Both first class waterfront and wooded campsites are available at this very popular campground. Electric hookups are available on all 204 sites and water and sewer hookups are available on 134 sites. 196 sites at Bulltown Campground can be reserved through the National Recreation Reservation Service. Sites 1-8 in Volunteer Village are primarily used by volunteers, and when these sites are not being used by volunteers, they are available on a first-come first-serve basis.

The area has accessible shower/restroom facilities, playgrounds, an interpretive shelter that may be reserved by campers for special occasions, a sewage dump station, fishing, boating, and other water recreation opportunities, hiking, and hunting. The swimming beach and historic area are nearby.



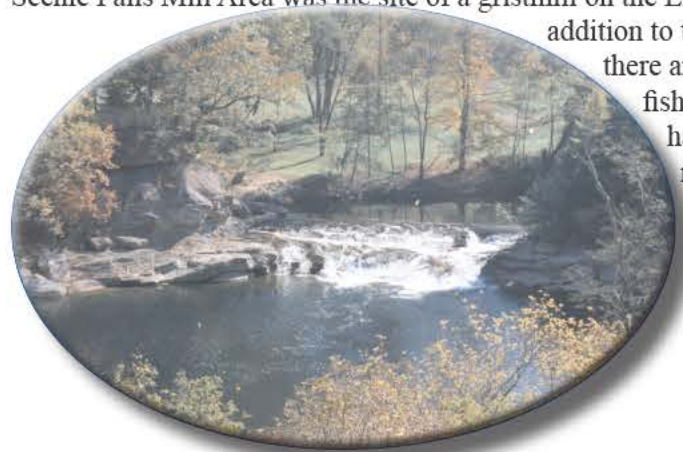
Bulltown Historical Area

Adjacent to Bulltown Campground is the Bulltown Historical Area, which includes a visitors center, historic structures dating back to the mid to late- 1800's, a Civil War Battlefield, and the turn-of-the-century Cunningham Farmstead. Self-guiding trails and a section of the Weston and Gauley Bridge Turnpike are available for visitors to walk. Special programs and tours are available during the summer months. Groups may arrange tours with the staff at the Visitor Center or by calling the Resource Manager's Office.

The Battle of Bulltown occurred on October 13, 1863, near the Union trenches overlooking a bridge across the Little Kanawha River on the Weston and Gauley Bridge Turnpike. The turnpike connected Lewis, Braxton, Nicholas, and Fayette counties, and was an artery of transportation during the Civil War. The skirmish lasted 12 hours. Colonel William L. Jackson (a native of what is now West Virginia and first cousin to Stonewall Jackson) led the Confederate forces. They attacked the Union forces at 4:30 a.m. Captain Mattingly led the Union forces in repelling the attack on their fortifications. The battle ended about 4:30 p.m. There were casualties on both sides. There was one civilian casualty-Moses Cunningham-who ran out of his nearby farmhouse into the line of fire and shouted, "Hurrah for Jeff Davis!" He was clipped by a bullet, but recovered. The Battle of Bulltown is reenacted biannually.

Falls Mill Area

Scenic Falls Mill Area was the site of a gristmill on the Little Kanawha River. In addition to the beautiful waterfall, there are picnic tables, excellent fishing opportunities, handicap accessible restroom facilities and a ball field.



Trails

Burnsville Lake offers an extensive trail system for hiking, bicycling, and horseback riding. The Civil War Era Weston and Gauley Bridge Turnpike Trail connects Burnsville Lake to Stonewall Jackson Lake and has over 10 miles of picturesque scenery. The Weston and Gauley Bridge Turnpike Trail is on the National Park Service's National

Recreation Trail Register and the National Register of Historical Places. Trail maps are available at the Resource Manager's Office.

Dam and Lake Statistics

The Dam— Earthen Section

Top Length	930 ft.
Top Width	24 ft.
Base Width	600 ft.

The Dam— Concrete Section

Top Length	470 ft.
Top Width	17 ft.
Concrete	82,825 cu. yds.

The Lake

Drainage Area	165 sq. mi.
---------------	-------------

Summer Pool

Summer Pool Elevation	789 ft msl
Shoreline	30 mi.
Length	9.5 mi.
Surface Area	968 acres
Average Depth	14 ft.

Winter Pool

Elevation	776 ft. msl
Surface Area	550 acres

Outlet Works

5 gated sluices	4.5 ft. high x 4 ft. wide
3 low-flow sluices	30" diameter
3 tainter gates	42 ft. wide x 35 ft. high

For More Information
Resource Manager's Office (tours, recreation and dam)
Burnsville Lake
2550 S Main St.
Burnsville, WV 26335
Phone 304-853-2371
24-hour Message 304-853-2398
Bulltown Campground 304-452-8006
Riffle Run Campground 304-853-2583
Bulltown Historic Area 304-452-8170

Huntington District Lake Information
<http://www.lrh.usace.army.mil/>
Email BurnsvilleLake@usace.army.mil

National Recreation Reservation Service
877-444-6777 or www.recreation.gov