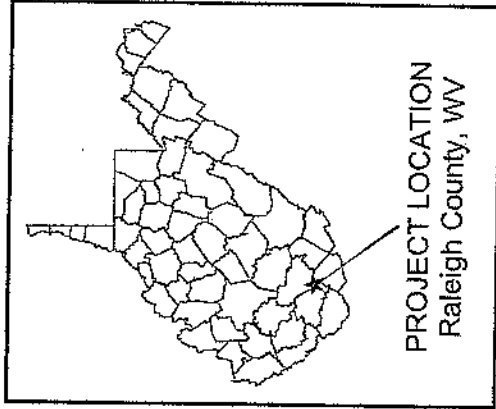
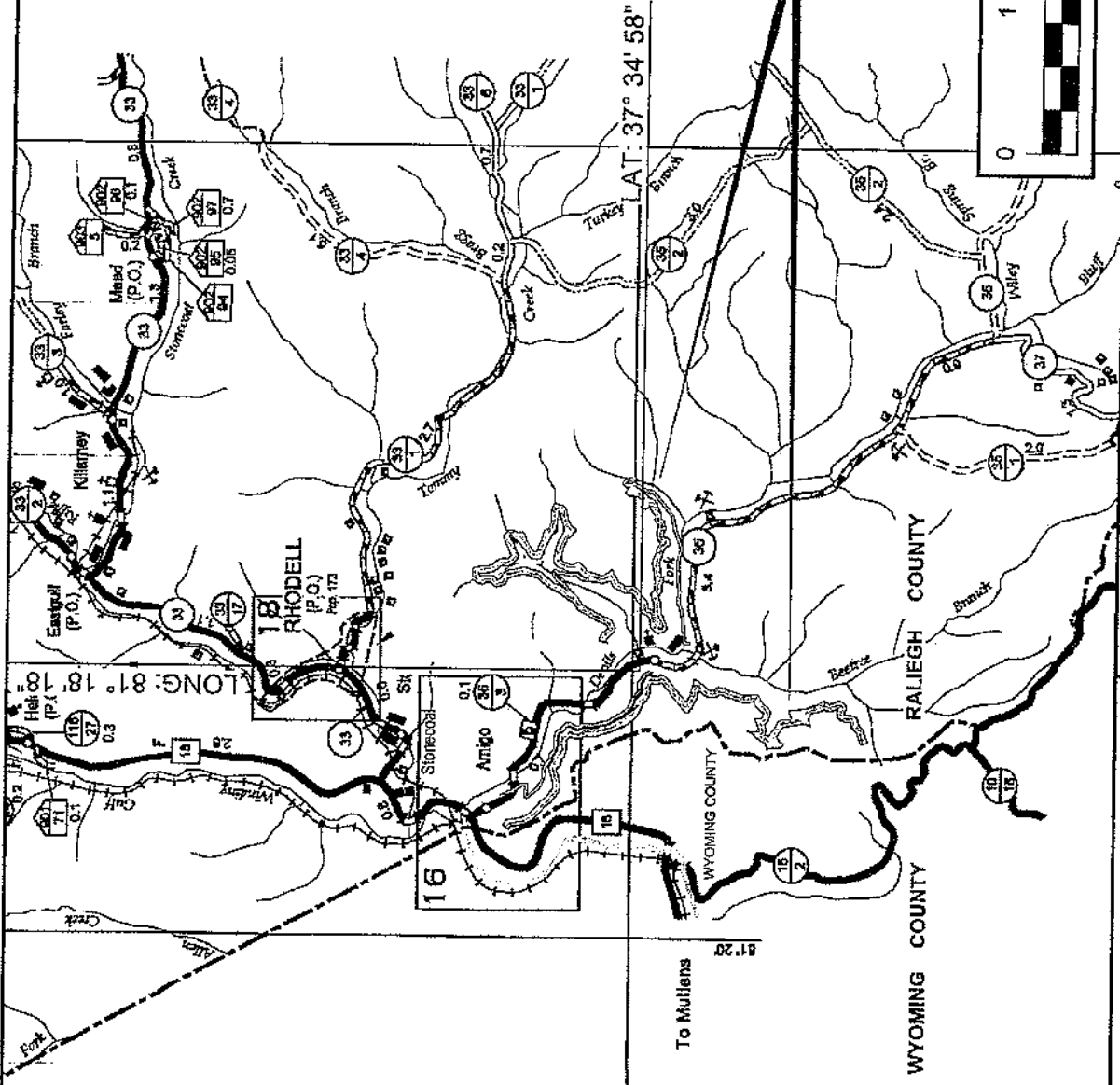
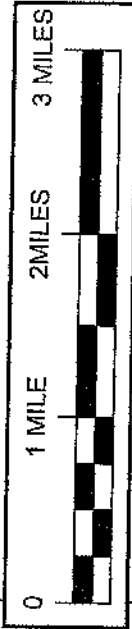


The following document is not readable via Optical Character Recognition. For more information or if you require the document to be read aloud please call: 304-399-5353



PROJECT LOCATION
Raleigh County, WV

PROPOSED
PROJECT BOUNDARY
PERMIT NO. S-3010-13



LRH-2013-997-GUY
Devils Fork Highwall Mine No. 2

General Location Map
Devils Fork Highwall Mine No. 2
SMA No. S-3010-13
NPDES No. WV1027816

Exhibit No. 1

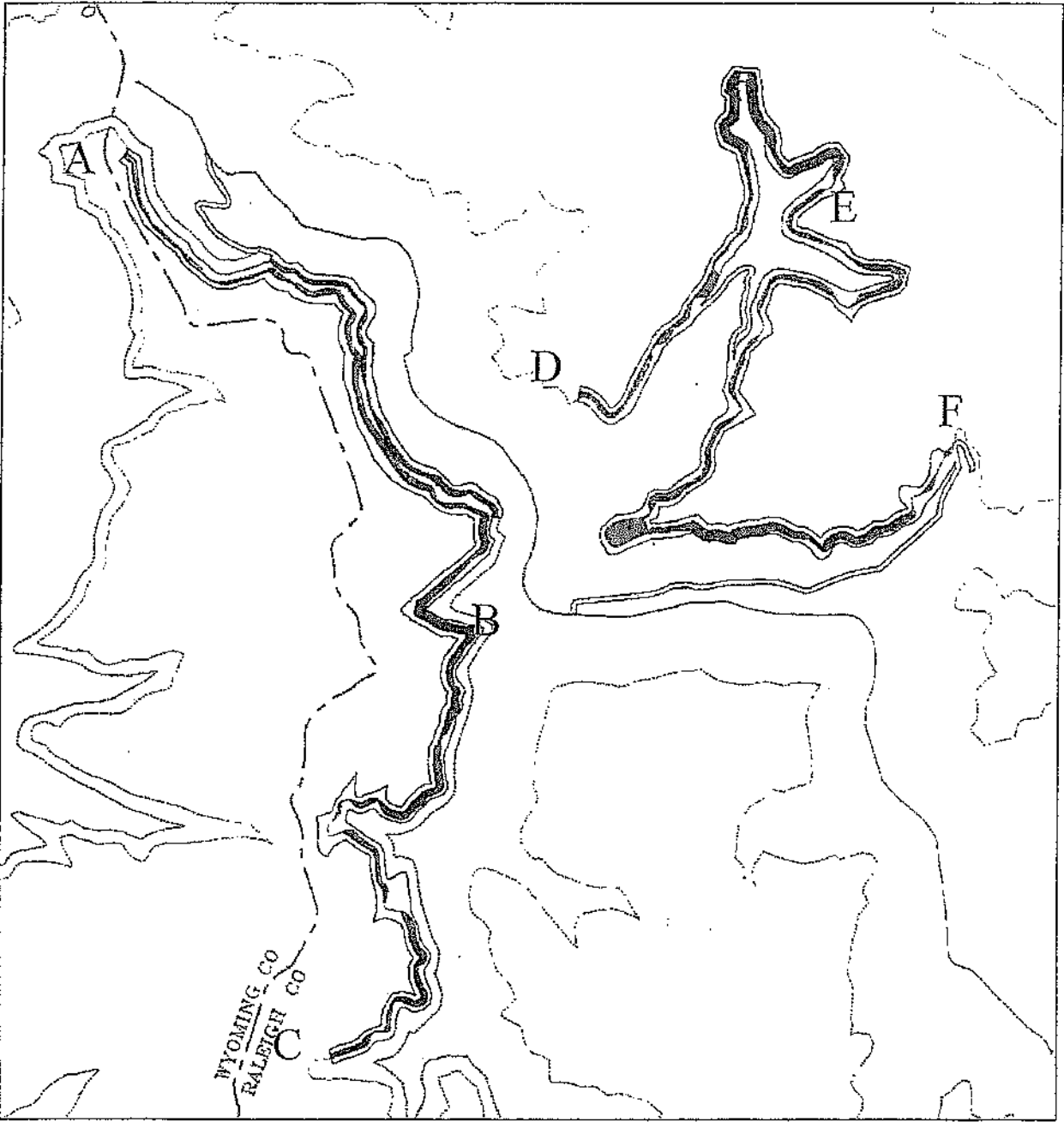
Date: June 2014

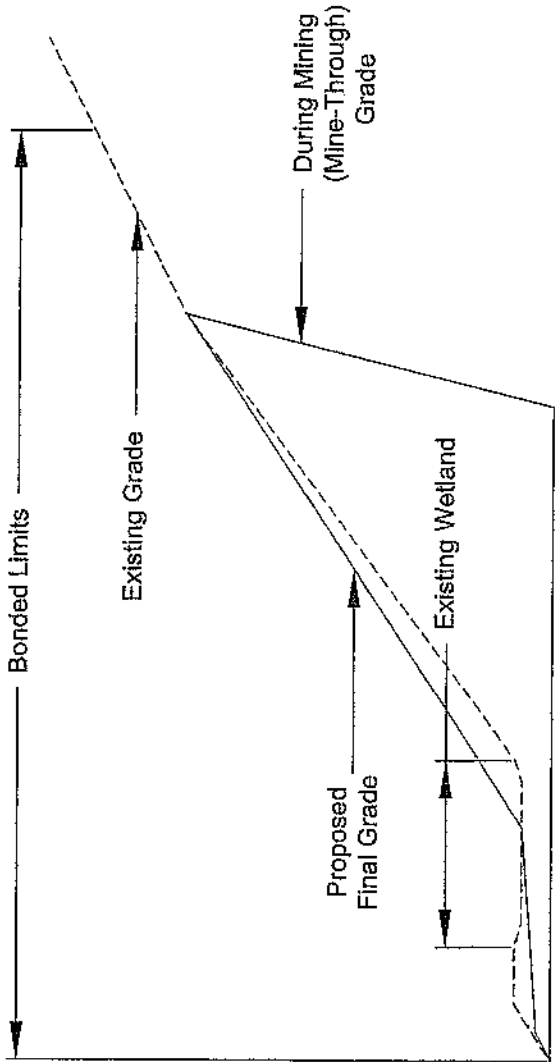
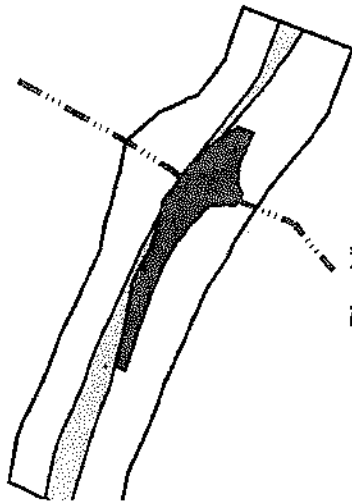
Dwg. No. 112-22-Exhibit 1

Drawn By: MOT

Pocahontas Coal Company, LLC
109 Appalachian Drive
Beckley, WV 25801

FIGURE 2. Map highlighting areas to be impacted by Pocahontas Coal Company's Devils Fork Highwall Mine No. 2. Orange areas are mineral removal; yellow areas are haul roads and other bonded areas. Letters correspond to topographic map in FIGURE 3. REI Consultants, Inc.





Section View
Not to Scale

| Legend | |
|--------|------------------------------------|
| | Bonded Mineral Removal |
| | Bonded Ancillary & Other |
| | Intermittent Stream |
| | Wetland |
| | Existing Grade |
| | During Mining (Mine-Through) Grade |
| | Proposed Final Grade |

- Notes:
- 1) Impacted stream reaches to be re-created / restored will be shaped to the approximate dimension, pattern, and profile to ensure long term stability and functionality as per the approved mitigation plan.
 - 2) Mitigation activities for impacted wetlands and open water features shall be performed off-site as specified in the approved mitigation plan.

| |
|----------------------|
| Date: September 2015 |
| Drawn By: MOT |

Pocahontas Coal Company, LLC
109 Appalachian Drive
Beckley, WV 25801

Typical Mine-Through Area
Devil's Fork Highwall Mine No. 2
SMA No. S-3010-13 ,RPDES No. WV1027816

FIGURE 3. Topographic map showing relation of impact areas depicted in FIGURE 2 to visible pre-law mine bench. Letters correspond to impact map in FIGURE 2. Also shown is Beetree Branch south of Madeline. R.E.I. Consultants, Inc.

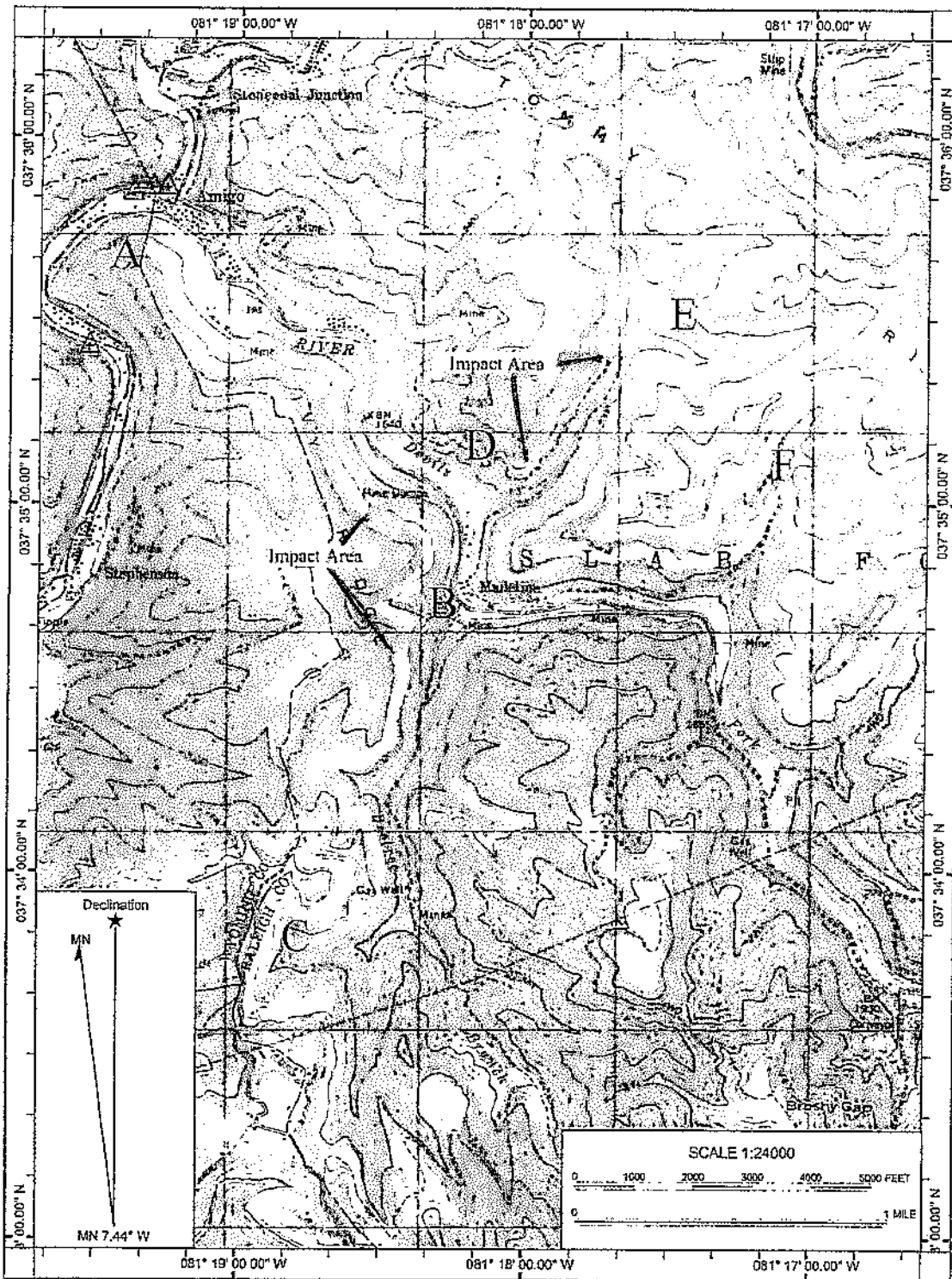


FIGURE 4. Topographic map showing relation of impact areas, stream mitigation area, and wetland mitigation area. REI Consultants, Inc.

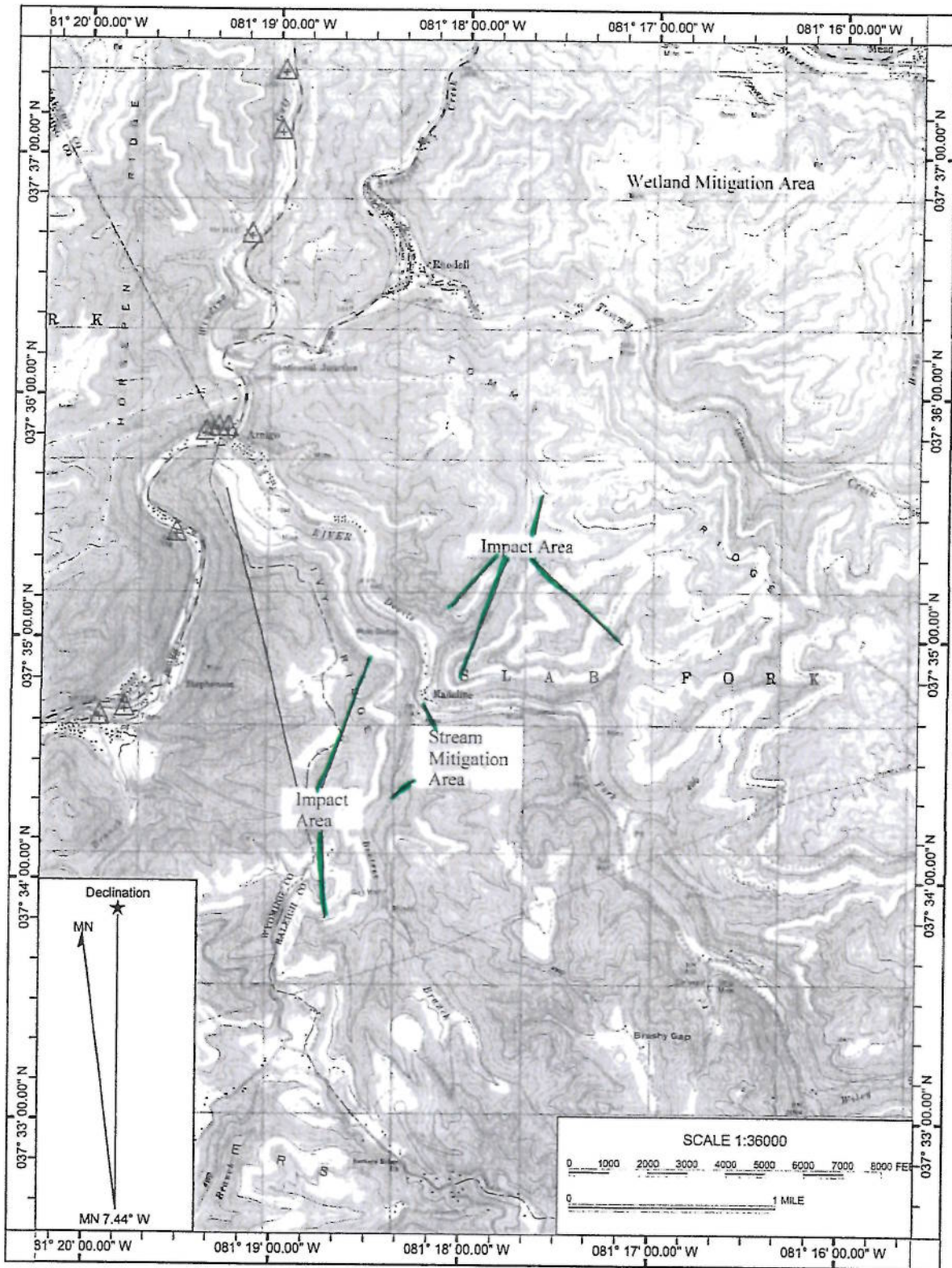


FIGURE 5. Expanded view of Wetland Mitigation Area showing locations of open waters and wetlands to be used for mitigation. Note light blue lines where connectivity to jurisdictional channels will be verified or established. REI Consultants, Inc.

