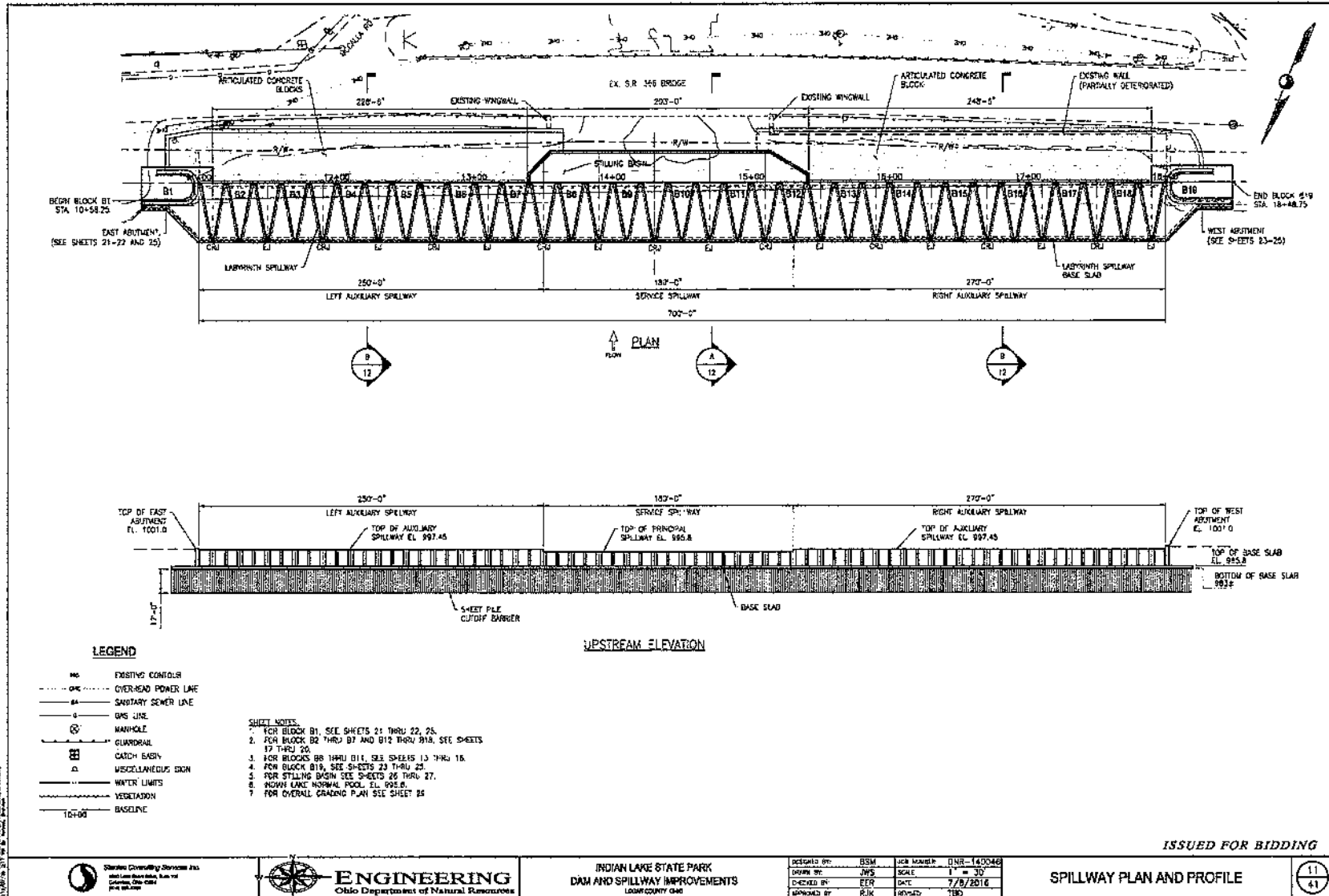


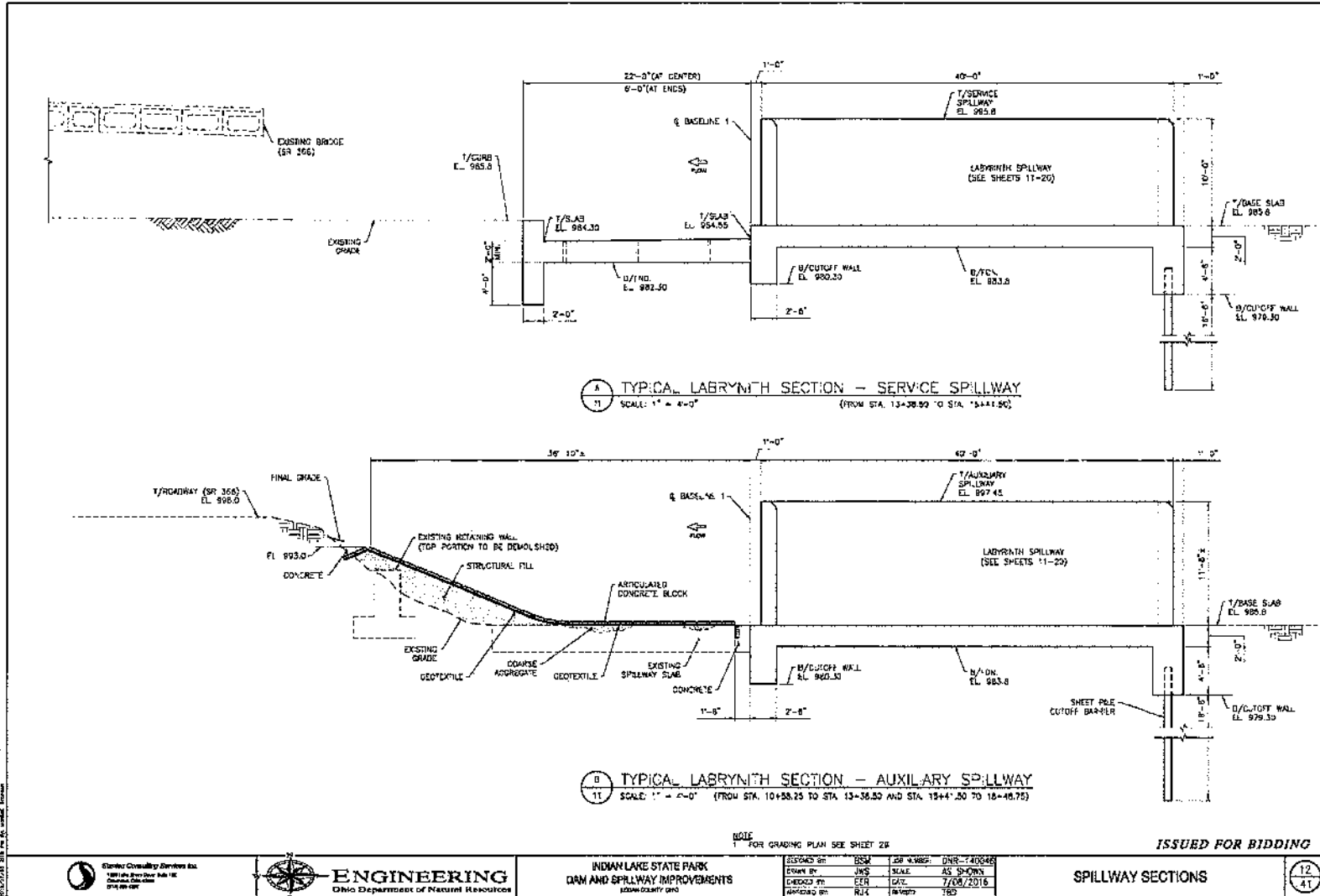


Figure 1. Project Location, as depicted on a 7.5' USGS Topographical Quadrangle Maps of Huntsville, Ohio and Russells Point, Ohio, 1960 and 1961 (photo revised 1982).

**Enclosure 2a**  
**Indian Lake Dam and Spillway Improvements**  
**Russells Point, Logan County, Ohio**



**Enclosure 2b**  
**Indian Lake Dam and Spillway Improvements Project**  
**Russells Point, Logan County, Ohio**



Stanley Cravath Engineers Inc.  
 1880 W. Broad Street, Suite 100  
 Columbus, Ohio 43261  
 614.885.0000



**ENGINEERING**  
 Ohio Department of Natural Resources

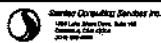
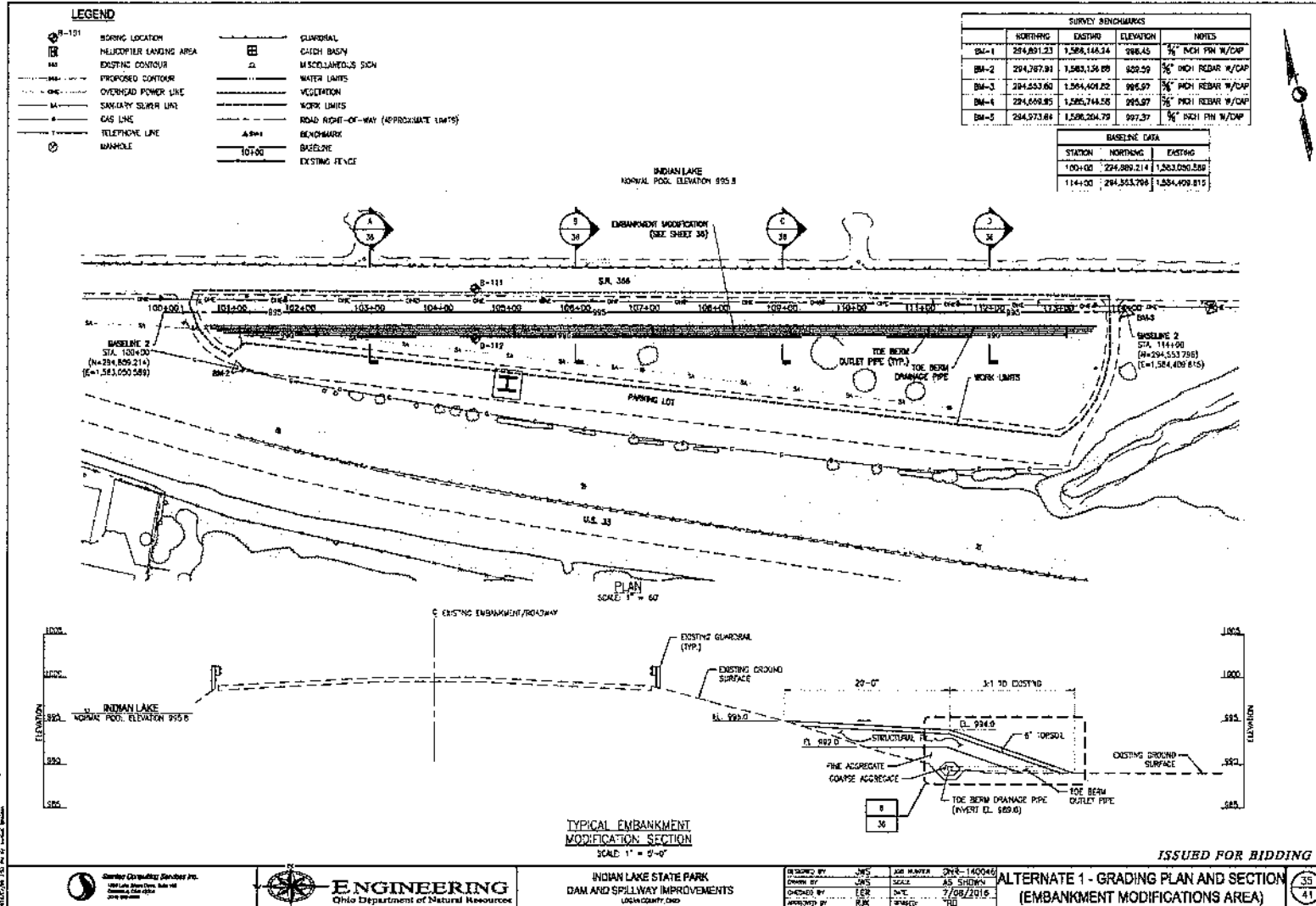
INDIAN LAKE STATE PARK  
 DAM AND SPILLWAY IMPROVEMENTS  
 LOGAN COUNTY, OHIO

DESIGNED BY	BSSM	JOB #	OH-14-00046
DRAWN BY	JWS	SCALE	AS SHOWN
CHECKED BY	CEB	DATE	7/28/2016
APPROVED BY	RJC	REVISED	380

SPILLWAY SECTIONS

12  
41

Enclosure 2c  
 Indian Lake Dam and Spillway Improvements Project  
 Russells Point, Logan County, Ohio



**ENGINEERING**  
 Ohio Department of Natural Resources

INDIAN LAKE STATE PARK  
 DAM AND SPILLWAY IMPROVEMENTS  
 LOGAN COUNTY, OHIO

DESIGNED BY: JWS  
 CHECKED BY: JWS  
 APPROVED BY: RJK

DATE: 7/08/2016

ALTERNATE 1 - GRADING PLAN AND SECTION  
 (EMBANKMENT MODIFICATIONS AREA)

35  
 41